

# Welcoming Students Back

*2021–22 Parent & Community Information*

---



*This plan is dynamic. The division will continue to re-work and make adaptations as new information and guidelines become available.  
(A record of updates is on the inside cover)*

## **RECORD OF DOCUMENT REVISIONS:**

**August 17, 2020**

Initial publication

**September 1, 2021**

Version 1.10

All sections updated to reflect Fall 2021 re-opening

# Message from our Superintendent

In August 2021 Manitoba Education announced the plans for the reopening schools in Manitoba: Restoring Safe Schools 2021–2022: [https://manitoba.ca/asset\\_library/en/covid/k12-guidelines-aug2021.pdf](https://manitoba.ca/asset_library/en/covid/k12-guidelines-aug2021.pdf)

The provincial document summarizes the plan for reopening schools in the fall of 2021, which includes:

- Ensuring a safe and healthy environment for all students and staff
- Having all students in class full-time
- Continuing to implement public health fundamentals (self-screening, hand hygiene and staying home when sick)
- Monitoring and implementing additional public health measures and contingency planning, as needed, to address changes in local community or school epidemiology
- Shifting towards addressing the impacts the pandemic has had on the mental health, well-being and learning of students and the school community

With the acknowledgement that we will be living with COVID-19 for the foreseeable future, it is in the best interest of children to be in school, and we must lessen the risks of COVID-19 for students and families to ensure that learning continues for all. In RETSD we will support this by requiring masks for all staff, students and visitors.

Manitoba Education, along with River East Transcona School Division, will continue to work closely with public health, parents, caregivers and students.

In RETSD, and across Manitoba, in-class learning will resume for all students in kindergarten to Grade 12 on September 7, 2021.

Schools in RETSD continue to plan for a safe return to learning for all students and staff. We know that families have many questions and concerns regarding the start of school. Some of these questions will be best answered by your school directly as each school may have some school-specific information for parents and students.

As well, Manitoba Education has created a guide for parents and caregivers that can be found at: Restoring Safe Services: [https://manitoba.ca/asset\\_library/en/covid/k12-GuideForParents-aug2021.pdf](https://manitoba.ca/asset_library/en/covid/k12-GuideForParents-aug2021.pdf)

This plan has been updated based on the current **Pandemic Response Level Yellow—Caution**. Please note: In all cases, except for brief encounters, all staff and students are expected to maintain two-metre distancing person-to-person to the greatest extent possible.

RETSD remains committed to working with parents and caregivers as we navigate the return to school. You are entrusting us with your most valuable commodity, your child. By working together, we are confident that your child will experience the best possible return to school.



Kelly Barkman  
Superintendent/CEO  
River East Transcona School Division

## A Note From Mrs. Kostecki and Mrs. MacDonell

Welcome students and families of Joseph Teres to the 2021 - 2022 school year. We are looking forward to welcoming students back to in school learning on Wednesday September 8, 2021, Day 2 of the school day cycle. We have missed all of you so much! Our staff have been very busy preparing for students for the new year and look forward to welcoming them in person.

We have spent many hours preparing for the reopening of our wonderful school. Over the past year, we have had to rethink and redesign many aspects of the school day. We are all working with new routines and procedures to optimize safety, health, wellness and learning. Please understand that there may be new procedures that are in place and we appreciate your cooperation and understanding. We know that there may need to be adjustments made based on a variety of factors. We will relook at any areas of concern as a school team and adjust as needed. We all appreciate your patience as we navigate our return to school.

Please review the following information carefully to help prepare your child(ren) for their return to the school building. This document includes divisional information and **school specific information highlighted in yellow**. Information is divided into sections with divisional information stated first followed by our school specific information.

If you have questions or concerns, you can communicate in the following ways:

1. Contact your child's Classroom Teacher through email for classroom based questions. Email addresses are the first initial of the Teacher's first name, followed by the last name. Include @retsd.mb.ca at the end of the Teacher's last name.
2. Send your questions or concerns to our school website at <http://jtschool@retsd.mb.ca>
3. Call the school office at 204-958-6860.
4. Contact the Administrative team for general questions or concerns:

Mrs. Sherri Kostecki (Principal) – [skostecki@retsd.mb.ca](mailto:skostecki@retsd.mb.ca)

Mrs. Pam MacDonell (Vice Principal) – [pmacdonell@retsd.mb.ca](mailto:pmacdonell@retsd.mb.ca)

Wishing you a wonderful school year.

Ms. Sherri Kostecki  
Principal

Mrs. Pam MacDonell  
Vice Principal

# TABLE OF CONTENTS

## SCHOOL PREPAREDNESS

School Access, Community Use & Entry Process .....	1
Classroom Transition, Cohorts, Student Movement Plans .....	2
COVID-19 Signage .....	3
Transportation .....	4
Self-Screening, Symptom Monitoring Process & Personal Hygiene .....	4
Use of Personal Protective Equipment (PPE) .....	5
Protocol for Students Who Exhibit Symptoms.....	6
Protocol if there is a Positive Case in the School .....	6
Cleaning & Sanitization Schedule.....	7

## SCHOOL ROUTINES

School Physical Setting.....	7
Student Attendance .....	7
Timetable .....	8
Recess & Locker Breaks.....	9
Lunch Hour .....	10
Play Structures .....	11
Assemblies .....	11
Field Trips.....	12
Volunteers .....	12

## TEACHING, LEARNING & WELL-BEING

In-Class Learning .....	13
Returning to in Class Learning .....	13
The Possibility of Remote Learning.....	14
Assessment & Reporting.....	14
Subject Areas & Specialist Classes .....	15
Student Specific Programming .....	16
Bring Your Own Device (BYOD).....	16
Student Access to Devices & the Internet .....	17
Protocol for Shared Equipment .....	17
Well-Being, Wellness & Supports Checks .....	18

## COMMUNICATION

Microsoft Teams.....	19
Stay Informed.....	19
Concern Protocol .....	20

## ADDITIONAL INFORMATION

What Should I Do if My Child is Sick? (poster).....	21
When Can Students Attend School? (poster) .....	22

# SCHOOL PREPAREDNESS

## School Access, Community Use & Entry Process

Restricting access to buildings is a strategy to reduce the probability of an infected person entering the school. All RETSD buildings are implementing a monitored access system for the start of school. This means all **parents or visitors MUST report to the office upon entering the school**. All parents or visitors are expected to use the self-screening tool prior to coming to the school. To help protect the health and safety of everyone, non-medical cloth masks are mandatory for any parent or visitor who needs to enter the school. Everyone (including all students and staff) are required to wear a mask when in a school or other RETSD building or bus.

Whenever possible, parents, visitors or caregivers are asked to email or call the teachers, school or administrators when you need to talk as opposed to coming to the school. While schools are open, parents are encouraged to continue the practice of only supporting essential in-person visits.

Access to the school is limited. **Clear directions will be provided in each school for entry, exit and movement within the school.**

**Everyone who enters an RETSD facility MUST monitor for symptoms and exposure.** This responsibility resides with the person or their parent/caregiver. Monitoring is to be done using the COVID-19 Shared Health Screening Tool at: <https://sharedhealthmb.ca/covid19/screening-tool/>

**Hand sanitizing stations will be set up at the main entrances of schools.** Everyone entering the school should sanitize their hands.

Keeping potentially sick or infected or symptomatic people out of the building helps reduce the probability of community-based transmission of the virus. **Any person who exhibits signs and symptoms of illness are asked not to enter the facility and to seek applicable health testing.** Additionally, all schools have an identified space to isolate students who display COVID-19 symptoms.

While community user groups, and school use permits can resume, the exact details of RETLife, City of Winnipeg programming and other community users will be determined as the year progresses and school needs are determined.

Contact information for all visitors and community users MUST be maintained for contact tracing purposes and all divisional and public health guidance/direction related to COVID must be followed (including mask wearing).

### Joseph Teres Information

**Our school will be following all guidelines listed above.**

All doors to our school building will be locked including the front main entry doors. Please call or email when you need to talk to a staff member. We are doing our utmost to limit the number of parents and visitors in the building at any time to keep our students and staff safe and healthy. We kindly ask parents to drop their children off and exit the school property as quickly as possible allowing students to enter the building independently. In following protocol, we ask parents to not congregate on school property. Staff will be available to offer your child support as they learn routines in the first few weeks of school.

If you need to come to the school, please call the school at 204-958-6860 to make an appointment or to have a staff member meet you at the front doors (this information is also posted on the front entry doors). We respectfully ask you to wear a mask if you need to enter the building and maintain physical distancing. Please sanitize your hands at the front entrance area. All visitors to the school will be logged.

If a student needs to be picked up during the school day, our clerks will call into the classroom for the child to come down

to the office. This practice reflects our usual practice at Joseph Teres and will also support limiting the number of additional people in our building. Notifying your child(ren)'s Classroom Teacher and our office staff in advance will ensure this process is done as quickly and efficiently as possible.

## Classroom Transition, Cohorts, Student Movement Plans

**RESPONSE LEVEL YELLOW–CAUTION**—In-class learning will resume for all students on September 7, 2021. **Cohorts remain in place for K–8. Except for brief encounters, all staff and students are encouraged to maintain two metres distancing person-to-person to the greatest extent possible.**

The movement of people within a school will be minimized as much as possible and it is critical to maintain physical distancing as much as possible.

Cohorts involve keeping groups of students together and avoiding interactions with other groups. Physical distancing within the cohort is encouraged to the greatest extent possible. Given the full return of students to in school learning, it is understood that in many cases 2 metre distancing may not be attainable nor practical in the school setting. The purpose of cohorts is to limit the mixing of students and staff so that if a child or employee develops an infection, there are fewer possible exposures and contact tracing can be more efficient. Cohorts are required for K-6 and in RETSD given that cohorts were planned for in the spring, to the greatest extent possible, we will maintain cohorts through to grade 8. It is understood that there will be variability and exceptions in grade 7 and 8 however these should be limited.

All pedestrian traffic inside the facility should follow the same concepts as the “rules of the road” and the directional markers. People briefly passing one another in hallways without six feet of physical distance is not considered high risk, but will be minimized by staggered/staged starts and exits at each school. Whenever possible when cohorts are in place, different entry/exit times are being scheduled. Whenever possible in K-8, students are to enter the school upon arrival to ensure they are staggered and will be released in a similar manner at the end of the day.

### Joseph Teres Information

**Our school will be following all guidelines listed above.**

Students will be part of their classroom cohort and part of a recess/lunch cohort.

### Recess and Lunch Cohorts

Cohort Kindergarten Red Mrs. Polakoff, Mrs. Kucherhan

Cohort Grade 1 Yellow Ms. Sawa, Mrs. Watchorn, Mrs. Shawarsky/Mrs. Watson

Cohort Grade 2 Blue Mrs. Aquin, Mr. Kroetsch, Mrs. Freiter

Cohort Grade 3 Green Mr. Taylor, Mr. Sidloski, Ms. Schade

Cohort Grade 4 Orange Ms. Natuik, Mrs. Deroo, Mrs. Schlag

Cohort Grade 5/4 and 5 Purple Ms. Niblett, Mrs. Sakundiak, Mrs. Moyer, Mr. Cairns

Grade K – 2 Cohorts will have AM recess at 10:15 – 10:30) and PM recess at 1:40 – 1:55 and will go outside from 11:45 to 12:15 and will eat lunch from 12:15 to 12:45.

Grade 3 – 5 Cohorts will have AM recess at 10:35 – 10:55 and PM recess at 2:00 – 2:15 and will eat lunch from 11:45 to 12:15 go outside from 12:15 to 12:45.

Students exiting to go outside will wait in their classrooms for all students who are currently outside to re-enter the building and clear the hallway area.

Each recess and lunch cohort will play in a designated area on a rotational basis.

Classroom cohorts will attend Music, Physical Education and Library, utilizing the outdoors as much as possible. As students move to these specialist classes, cohorts will be staggered to facilitate less movement in the hallways, as well as to avoid larger groups of students in a smaller physical space.

The inside of the school has floor markings to indicate the directional flow of traffic and designated waiting spots. Staff will be teaching and reinforcing the expectations regarding traffic flow in the school. This is part of our regular school start up, however, it will be done with increased attention and frequency this year. Posters are also displayed throughout the school to remind students of physical distancing, handwashing, cough and sneeze protocol and other expectations and guidelines.

We ask that students arrive no earlier than 8:45 am. The entry bell will ring at 8:50 am and all students are expected to be in the building by 8:55 am. During these times, students will enter the building through their assigned doors when the entry bell rings. Entry will be monitored by a staff member. Students will report to their classroom once they enter the school and remain seated at their desk. Staff will be on duty outside as well as inside to assist with physical distancing and traffic flow. Students arriving on the bus will go to their designated cohort area (physical distancing is expected) and will be directed to proceed inside by an adult at 8:50 am.

Students that are enrolled in Storybook daycare will be supervised by program staff to and from the school at appropriate times.

Students arriving late to school will need to enter the school by the front doors. The front doors will be monitored for a short period of time after 8:55 am.

Students will be dismissed at the end of the day at 3:30 through their designated cohort doors.

Parents are asked to not congregate on the school grounds. Please find a designated meeting place for your children. Please ensure that your child knows where to meet their sibling(s) and you as students will be dismissed out of assigned doors.

Access to the school for inclement weather will be at 8:45 am and will be directed by a staff member. Bus students will enter the school upon arrival when there is inclement weather.

## COVID-19 Signage

Manitoba Health has provided a variety of signage that is posted in all schools to communicate public health best practices. See them at: <https://www.gov.mb.ca/covid19/updates/resources.html>

Additionally, RETSD will be providing all schools with divisionally branded mask requirement signage.

### Joseph Teres Information

**Our school will be following all guidelines listed above.**

Our school will have signage posted at key entry points in the school. Signage will also be posted inside the school for reminders and reference by students and staff.

We will be teaching students, from Kindergarten to Grade 5, how to notice the signage in order to move through the building safely and efficiently. Arrows will indicate directionality and circles will illustrate proper social distancing of 2 metres where applicable. Staff will be referring students to the posters throughout the building that illustrate hand washing techniques, proper cough and sneeze protocol and social distancing.



## Transportation

**RESPONSE LEVEL YELLOW—CAUTION**—Buses will be running at regular capacity and assigned seating is an expectation. Fee- for-service will not be offered until such time as ridership and capacity are determined.

While drivers will wear a disposable medical mask, all school bus passengers are required to wear a non-medical mask. These masks should be put on before getting on the bus and taken off after exiting the bus, if removal is appropriate for the setting.

To accommodate limitations to wearing a mask at school or on a school bus, information regarding the child's limitations to wearing a mask must be provided to the school. While a medical note is not required, details such as the date a parent/ guardian consulted with a health-care provider regarding their child's ability to safely wear a mask, and your child's medical limitations with wearing a mask, is required. Please see the school for the necessary documentation.

For those who would like to use a face shield, it must be done in combination with a face mask. A face shield is not a replacement for a non-medical mask.

For more details about face mask exemptions, see the linked document:

Guidance for Mask exemptions in Schools: [https://www.edu.gov.mb.ca/k12/covid/docs/mask\\_exemption.pdf](https://www.edu.gov.mb.ca/k12/covid/docs/mask_exemption.pdf)

### Joseph Teres Information

**Our school will be following all guidelines listed above.**

Our school has bike racks at the front of the school for student use. Students must lock up their bike to the bike rack. Please ensure that your child knows how to lock and unlock their bike. A reminder that scooters are not permitted at the school.

Please remember that parents are asked to not use the bus loop or staff parking lot as a pick-up and drop-off area. These are high traffic areas and children walking through is not safe. Parents are asked to use the city parking lot at the far end of the back field, the far side of the community center parking lot, or one of the side streets. Please use designated sidewalks and crosswalks. Our patrols will be on duty before and after school each day to support safe crossing. If you are picking up your child(ren), please ensure that your child(ren) is aware of where you will be meeting them each day. We recommend selecting a regular location to help increase your child's comfort level. Please remember safety over convenience.

## Self-Screening, Symptom Monitoring Process & Personal Hygiene

Students must stay home if sick or displaying symptoms. Monitoring for symptoms and exposure is to be done using the COVID-19 Shared Health Screening Tool. Symptoms may include:

- Cough
- Headache
- Fever/ chills
- Muscle aches
- Sore throat/ hoarse voice
- Shortness of breath/ breathing difficulties
- Loss of taste or smell
- Vomiting, or diarrhea for more than 24 hours
- Runny nose
- Fatigue
- Nausea or loss of appetite
- Conjunctivitis (pink eye)
- Skin rash of unknown cause

See a more detailed description on the RETSD website: <https://sharedhealthmb.ca/covid19/screening-tool/>

Public health orders are to be followed in all schools. To reduce the risk of infection from COVID-19, students and visitors are expected to take common prevention measures, including regular handwashing with soap and warm water for at least 15 seconds. Dry hands thoroughly. An alcohol-based hand cleanser can be used if your hands are not visibly dirty and soap and water are not available.

It is especially important to clean your hands:

- After coughing or sneezing
- When caring for a sick person
- Before, during and after you prepare food
- Before eating
- After toilet use
- When hands are visibly dirty

You should also cover your mouth and nose with a tissue when coughing or sneezing, or you can cough or sneeze into your sleeve. Throw used tissues in the garbage and immediately wash your hands or use an alcohol-based hand cleanser.

<https://www.gov.mb.ca/covid19/prepareandprevent/index.html>

### **Joseph Teres Information**

**Our school will be following all guidelines listed above.**

**Students and staff will be engaging in regular handwashing and/or sanitization throughout the school day.**

## **Use of Personal Protective Equipment (PPE)**

**RESPONSE LEVEL YELLOW—CAUTION—Please be assured that all staff who are working across cohorts or schools MUST wear disposable medical masks.**

Masks offer an added layer of protection. All students, teachers, staff and visitors are mandated to wear a non-medical mask in all schools, other RETSD buildings and buses. Extra masks will be made available at all schools, sites and buses throughout the school year for those who do not have their own.

**While mask breaks will be permitted at appropriate times (when seated and/or eating), masks are to be worn by students in all indoor school environments including during physical education. Masks can be removed when students are outdoors and consistently maintaining distancing. Teachers can have a station in physical education where students can briefly take off their mask indoors provided distancing is maintained and there is limited/no movement.**

Parents are strongly encouraged to talk to their children about how to wear a non-medical mask. To put on a mask safely, perform hand hygiene. Place the mask on the face carefully so it covers your mouth and nose, handling it with the strings or elastic ear loops as much as possible, and mould the nose bridge to ensure it does not move while it is on. Avoid touching the mask once you have put it on. If the mask needs to be adjusted, hands should be cleaned before and after adjusting the mask. Never pull the mask down below the nose, mouth or chin. Never dangle the mask from one ear or both ears. To remove the mask safely, remove it from behind using the strings or elastic ear loops. Do not touch the front of the mask. Perform hand hygiene after removing the mask. Non-medical masks should be laundered daily.

Some students might require specific interventions or supports that cannot be delivered from a distance. Precautions related to these types of supports vary depending on the needs of the individual student. School staff will be in contact with the

families of students who may require this support while at school.

Staff must wear non-medical masks and may wear PPE as appropriate and where physical distancing cannot be maintained in order to support additional student needs.

To accommodate limitations to wearing a mask at school or on a school bus, information regarding the child's limitations to wearing a mask must be provided to the school. While a medical note is not required, details such as the date a parent/guardian consulted with a health-care provider regarding their child's ability to safely wear a mask, and your child's medical limitations with wearing a mask, is required. Please see the school for the necessary documentation.

For those who would like to use a face shield, it must be done in combination with a face mask. A face shield is not a replacement for a non-medical mask. For more details about face mask exemptions, see the linked document: Guidance for Mask exemptions in Schools: [https://www.edu.gov.mb.ca/k12/covid/docs/mask\\_exemption.pdf](https://www.edu.gov.mb.ca/k12/covid/docs/mask_exemption.pdf)

### **Joseph Teres Information**

**Our school will be following all guidelines listed above.**

## **Protocol for Students Who Exhibit Symptoms**

If a student develops symptoms while at school, they will be isolated in a predetermined isolation space. Where a separate room is not available, students will be kept at least two metres away from others. A mask will be provided for and worn by the child exhibiting symptoms (noting masks are required by everyone in schools and other RETSD buildings). The student's parent/caregiver will be notified to come and pick them up immediately and instructed to call Health Links at 204.788.8200 or 1.888.315.9257.

A sick child can return to the school (*What Should I Do if My Child is Sick?, When Can Students Attend School?*) once it has been determined that it is safe to do so by their health care provider or public health. If that child has a positive test, further direction will be provided by public health.

### **Joseph Teres Information**

**Our school will be following all guidelines listed above.**

Please ensure that your own contact information as well as your emergency contact information is current. If you or your emergency contact is called to the school to pick up your child, please plan to come to the school promptly to ensure there are less students that may be waiting in our isolation area. You may wish to pick up all your children at that time, as a proactive measure to ensure your child's good health.

Please talk with your emergency contact to remind them that they may be called upon.

## **Protocol if there is a Positive Case in the School**

In the event of a confirmation of a case of COVID-19 connected with a class, public health will lead the response and provide guidance. Public health will advise staff and students if they have been in close contact, if they need to self-isolate or self-monitor and when they can return to school.

Decisions about school or class closures will be made on a case-by-case basis with public health leading the response and providing guidance.

Classroom teachers will support the development and provision of at-home learning packages for students who are

isolating or quarantined as directed by public health.

#### Joseph Teres Information

Our school will be following all guidelines listed above.

## Cleaning & Sanitization Schedule

RETSD has worked diligently to develop a cleaning and sanitizing plan for the re-entry of students. School custodial staff are aware of and are implementing this plan.

To increase cleaning and sanitation, we are:

- Cleaning and disinfecting with a focus on high-touch surfaces and common areas, however frequency can return to normal practices. Washrooms are the exception, as they require more intensive cleaning.
- Providing hand sanitizer in all areas of the schools as required
- Ensuring adequate supply of liquid soap and hand towels in all locations. Ensuring all air hand dryers are in working order
- Procuring disinfectant wipes for IT equipment to ensure shared devices are cleaned in between users

#### Joseph Teres Information

Our school will be following all guidelines listed above.

School Administration and custodial staff will be in regular consultation to ensure proper cleaning and sanitization of the school building.

## SCHOOL ROUTINES

### School Physical Setting

As per the messaging from the Chief Public Health Officer of Manitoba, schools are safe. Each classroom has been provided with sanitizer to help ensure cleanliness throughout the day. Additionally, soap and water are readily available throughout the schools. Common spaces are subject to more frequent cleaning by school custodial staff. In order to help maximize safety, water fountains that are not touchless are closed off or bagged so that they cannot be used. Bottle re-fill stations will continue to be available. Students must supply their own bottle, and these should not be shared.

#### Joseph Teres Information

Our school will be following all guidelines listed above.

We have several bottle refill stations. Students must supply their own water bottles, which will be sent home with students at the end of each day for cleaning.

## Student Attendance

Students are expected to attend in-class learning and fully participate even if remote learning is required at some point. Each school will work collaboratively with parents/caregivers to support learning for students who are medically advised not to return to school and provide the required medical documentation.

Schools will provide reasonable accommodation for students who have medically complex conditions based on a recommendation of limitations provided by a health-care provider for these students to not attend school. A medical note is required and helpful in better understanding the specific accommodation, as well as preparing for the safe return of the child to school as per regular school practices in supporting students with health needs (not specific to COVID-19).

Families who choose to educate their children at home can find more information about homeschooling by contacting:

**Homeschooling Office**  
**Manitoba Education and Training**

1567 Dublin Ave.

Winnipeg, MB R3E 3J5

Phone: 204.945.8138

Email: [homeschooling@gov.mb.ca](mailto:homeschooling@gov.mb.ca)

**Joseph Teres Information**

**Our school will be following all guidelines listed above.**

Please notify the school if you are home schooling you child.

## Timetable

The below noted timetable descriptions are general in nature. School-specific information will be available from your child's school beginning on August 23, 2021 (please contact the local school office as schools will open at varying dates).

### Early Years

**RESPONSE LEVEL YELLOW—CAUTION—In-class learning resumes for all students. Cohorts remain in place. Except for brief encounters, all staff and students are encouraged to maintain two-metre distancing person-to-person to the greatest extent possible.**

For the most part, timetables will stay as is. This schedule respects the required cohorting of students. Schools will provide all students as much time as possible for structured physical activity, outdoor experiences, and arts education.

Staggered/staged starts and exits are expected. Different entry/exit times will be scheduled based on cohorts. While it is discouraged, students who arrive at school prior to the designated entry time are to wait /play, using physical distancing, on the schoolyard in their cohort's assigned area. Staff will bring students into the school based on their staggered entry plan.

**Joseph Teres Information**

**Our school will be following all guidelines listed above.**

Students will be a part of a class cohort and a recess/lunch cohort. There will be no student activities that cross these cohorts (reading buddies, math buddies, etc.).

Music will take place in our large Music room to allow for physical distancing. Choir will be done by grade cohort and/or virtual opportunities to allow for physical distancing.

Physical Education will take place in the Gym or outside. There will be no changing of clothes for Physical Education classes. Please dress in comfortable clothes to allow for free and easy movement. Please dress for the weather as well as your Physical Education class could be outside.

Our Library is a large space that will provide for physical distancing for students.

Recess times have been adjusted to maximize outdoor time as well as specialty class time.

Classroom Teachers may choose to use outdoor learning areas with their students. Please dress appropriately for outdoor weather each day.

## Middle Years

**RESPONSE LEVEL YELLOW—CAUTION—In-class learning resumes for all students.**

For the most part, timetables will stay as is. This respects the diverse programming, curriculum, and safety guidelines. Schools will provide all students as much time as possible for structured physical activity, outdoor experiences, and arts education. While cohorts are required for Grade 6 and given that cohorts were planned for in the spring, to the greatest extent possible, schools will maintain cohorts through to Grade 8. It is understood that there will be variability and exceptions for students in Grades 7 and 8 however these should be limited.

In most cases, schools are planning to use different entry points for each grade/class. Different entry/exit times will be scheduled. While it is discouraged, students who arrive at school prior to the designated entry time are to wait, using physical distancing, on the schoolyard in their cohort's assigned area. Staff will bring students into the school based on their cohort based staggered entry plan.

## Senior Years

**RESPONSE LEVEL YELLOW—CAUTION—In-class learning resumes for all students.**

The senior years schools are working on adjusting timetables to reflect the provincial programming, curriculum, and safety guidelines. While students are not cohorted in senior years most schools have built timetables to pivot to cohorts if the need arises. Consequently, some timetables may have cohort based aspects to them.

*Student initiated timetable changes may be limited.*

## Recess & Locker Breaks

### Early Years

Recess is an important part of child development. Play, structured and unstructured, is central to student well-being. Recognizing this, recess will be maintained. To ensure the additional physical distancing measures and cohorting are supported, staggered recess schedules have been established at each school to ensure safety. An outdoor space has been designated for each class.

### Joseph Teres Information

**Our school will be following all guidelines listed above.**

Our am and pm recess times and our lunch hour will be staggered to allow for approximately half of our students on the playground at one time in designated areas. Grade level cohorts will come together to form a recess/lunch cohort that will play in a designated zone area. The zones will rotate throughout the six-day school cycle so that all students have a variety of places to play. For recess, approximately half of the students (Grade K – 2) will have an early am recess time and the other half of the students (Grade 3 – 5) will have a later am recess time. In the afternoon, approximately half of the students (Grade K – 2) will have an early pm recess time and the other half of the students (Grade 3 – 5) will have a later pm recess time.

Students will be in a designated recess and lunch cohort outside of approximately 90 students (in many cases the number



will be lower than 90). Each recess and lunch cohort will play in a designated zone on a rotational basis. Play areas will be rotated to allow for students to have different outdoor play options. Grade level cohorts will use their assigned doors for entry and exit.

### **Middle & Senior Years**

Respecting the need to ensure additional physical distancing measures and cohorting, locker breaks, in the traditional sense, will be adjusted. Recognizing the importance of breaks to overall student well-being, schools will build in breaks which ensure students stay in their assigned cohorts (middle years) or move directly to the next assigned class following the directional markings. Hallway traffic will be monitored to mitigate congestion. Students will not be permitted to linger in the halls or at lockers. If locker use is not discontinued, it must be significantly limited and monitored. Students are strongly encouraged to keep all personal belongings with them as much as possible.

### **Lunch Hour**

Students who normally go home for lunch will continue to do so. Upon returning to school, students will follow the appropriate school guidelines for accessing the schoolyard, designated areas, and school entry.

Students who stay at school for lunch will eat lunch in their cohort classroom (Early and Middle Years). Food must not be shared, and students are to supply their own food and utensils. Microwaves will be available. Outdoor times will be scheduled for all cohorts.

To support a safe noon hour break, utensils should be used, shared food containers will be removed from eating areas and if single serve packets of condiments are being used, they will be provided directly to students. Whenever possible, prepackaged snacks will be served directly to students.

Students are strongly discouraged from going off site at lunchtime and congregating at local establishments. Parents are encouraged to speak with their child about this important precaution.

### **Lunch Supervision Programs (Early Years)**

User pay lunch supervision programs will continue to operate. Programs will exercise a higher degree of attention to cleanliness. Students will eat lunch in their cohort classroom.

School administration and parent lunch committees are in regular contact to co-ordinate plans and support student safety.

### **Hot Lunch Programs/Canteens/Cafeterias**

Hot lunch programs, as well as cafeteria use/sales, may continue however it is imperative to avoid overcrowding.

Only school staff will handle, prepare and serve food, following all safe food handling protocols. This is inclusive of hot lunches etc.

In all cases, it is critical to ensure proper hand hygiene practices.

### **Breakfast & Snack Programs**

Recognizing the important role that schools play in the overall health and well-being of students, where possible, breakfast and snack programs will continue. Schools should carefully consider and where possible, limit the number of external personnel who come into the school to support these programs. All visitors must sign in and are required to wear masks.

## Joseph Teres Information

**Our school will be following all guidelines listed above.**

Our am and pm recess times and our lunch hour will be staggered to allow for approximately half of our students on the playground at one time. For lunch, one set of cohorts will eat first while the other set of cohorts will go outside. After 30 minutes, the inside cohorts will go outside and the outside cohorts will come inside to eat.

Students will be in a designated recess and lunch cohort outside of approximately 90 students (in many cases the number will be lower than 90). Each recess and lunch cohort will play in a designated zone. Play areas will be rotated to allow for students to have different outdoor play options. Cohorts will use their assigned doors for entry and exit.

Students will be encouraged to wash their hands several times each morning and several times each afternoon, using staggered schedules.

Personal items such as toys, stuffed animals and sports equipment should stay at home. During this time of COVID-19, we would like to ensure that additional items are not brought to school, unless requested by the Classroom Teacher.

The Classroom Teacher will communicate the lunch plans for the classroom. Students will have sufficient time to eat their lunch meal.

Administration and Lunch Coordinators will be in regular communication regarding the lunch program and its operations. Lunch Supervisors will work with as minimal cohorts as possible.

Hot Lunch options will be explored with our Parent Council as appropriate.

## Play Structures

Public health advises that playgrounds and play structures are low risk for transmission. There are no specific requirements for cleaning play structures. All play structures and swing sets are open.

## Joseph Teres Information

**Our school will be following all guidelines listed above.**

Our entire school playground area including the play structures will be designated for specific recess and lunch cohort groups. Each recess and lunch cohort group will consist of approximately 90 students (many groups will be smaller than this) in a large, designated area. These designated play areas will be changed on a rotational basis in order to give all students access to a variety of outdoor play opportunities. All staff will support students in knowing their designated play area.

Each classroom cohort will have their own designated recess equipment.

## Assemblies

While assemblies and gatherings are permitted, whole school student assemblies and gathering are not being permitted in RETSD. Smaller grade-specific or cohorted assemblies are recommended. For K-6, cohorted gatherings, as opposed to larger whole school gatherings are expected.

## Joseph Teres Information

**Our school will be following all guidelines listed above.**

We will consider alternate ways of participating and performing that would meet physical distancing guidelines within grade



level cohorts.

Our regular whole school in person assemblies and special events will not be taking place at this time. These assemblies include but are not limited to: our in person Open House, the Remembrance Day assembly, Halloween Parade, our Christmas Concerts and Family Evenings. This will also include pausing our school wide general assemblies and any cross grade activities until further direction is given on being able to host larger gatherings.

To promote a sense of celebration and community during the school year, our staff will be exploring and considering virtual and other alternate delivery forms that would meet physical distancing guidelines.

## Field Trips

All field trips/out of school excursions are permitted as long as the activities follow current public health recommendations and orders at the time.

While the recent Public Health orders permit overnight camps in cohorts up to 15, in RETSD, overnight trips remain prohibited. This is subject to change.

Presently, in keeping with Government of Canada guidelines, out of Canada excursions are not permitted as all non-essential travel is not advised.

### Joseph Teres Information

**Our school will be following all guidelines listed above.**

## Volunteers

Since we are in the early stages of re-opening, volunteers will not be permitted. Guest speakers and presenters are encouraged to be accessed electronically. If this is not feasible, providing all Public Health guidelines are adhered to, and the presenter is directly linked to curriculum (this is inclusive of student-specific programming and well-being supports), they can attend the site. All visitors and volunteers must adhere to self-screening, physical distancing, and recommended hygiene practices. Visitors or volunteers with any symptoms consistent with COVID-19 should not enter the school. Schools will keep a list of all visitors. To help protect the health and safety of everyone masks are mandatory for everyone in RETSD schools, buildings and buses.

### Joseph Teres Information

**Our school will be following all guidelines listed above.**

We respectfully ask you to wear a mask if you need to enter the building. Please sanitize your hands at the front entrance area. All visitors to the school will be logged.

Several special programs and events are run by or count on the assistance of dedicated volunteers and will need to be modified or suspended at this time.

## TEACHING, LEARNING & WELL-BEING

### In-Class Learning

As has been directed by Manitoba Education, in-class learning will occur with additional public health measures. While the educational programming will continue to be best practice, some logistical changes may be necessary. These changes will include:

- Requiring masks. Mask wearing will be especially important any time students are not seated or are engaged in group work or one-on-one interactions with a staff member. RETSD views mask wearing as an important strategy to support health and safety of all as well as a key to the re-introduction of collaborative group learning experiences that have been impacted by the pandemic.
- Maintaining social distance and hygiene within the classrooms
- Cohorting students in kindergarten to Grade 8

**RESPONSE LEVEL YELLOW—CAUTION—Given that to the greatest extent possible a two-metre distancing requirement is desirable and encouraged within the parameters of all students engaged in in-school learning, schools will be aggressively ensuring that excess furniture is removed from classrooms to support the distancing. The division has provided schools and maintenance staff with detailed instructions to achieve this.**

### **Joseph Teres Information**

**Our school will be following all guidelines listed above.**

Our Classroom Teachers will be collaborating with each other to share teaching strategies and learning activities.

Students will be cohorted in their own classroom for learning. Students remain in their classroom cohorts for learning each day. Cross grade level groupings (reading buddies, math buddies, etc.) will not occur at this time.

Students will have access to the Gym, Music Room and the Library following commuting, transition and entry and exit guidelines.

Each child will have their own supplies to use. Supplies will be kept in a personal container suitable to the grade level.

## **Returning to In Class Learning**

Recognizing that students are returning to school with more varied learning experiences than usual, all schools are planning to support students with learning as needed.

Learning is not a one-time event. It will be viewed as an ongoing process throughout the school year. Learning gaps will be identified and monitored. To support on-going learning, your child's teacher will employ the following approaches:

- Initial assessments will be conducted to provide a starting point for teachers; however information will continue to be collected
- Teachers will plan for instruction using this information
- Students will be provided with a variety of opportunities to learn and to demonstrate understanding
- Teaching will be focused on goals of building independence and self-motivation so that students have the skills to move to remote learning if required
- Recognizing the uncertainty of the situation, teaching will be planned to ensure that learning continuity is in place for students should further disruptions arise
- The focus of learning will be on understanding, not assignments

### **Joseph Teres Information**

**Our school will be following all guidelines listed above.**

School staff will be working diligently to welcome students back to school. Although the return to school is going to look and feel different for everyone, we all want students to feel safe, welcomed, confident and competent. We want school experiences to be hopeful, joyful and positive.

Classroom Teachers and Student Services staff have participated in grade level and transition meetings to discuss student programming strengths and needs. While all subject areas are important, literacy and numeracy instruction will continue to be a prime focus.

Teachers will continue to engage in conversations with our Student Services team and Administrators, as they look at student evidence of learning. We follow a triangulated approach of assessment, believing that observations of students in learning situations, conversations with them about the learning process and the products they create each play an integral role in indicating where a student is at academically.

## The Possibility of Remote Learning

Students and families need to be prepared for a blended or fully remote learning model that allows transition of teaching and learning from in-class to remote with as little disruption as possible. Should this arise, schools will be in contact with parents to communicate next steps.

### Joseph Teres Information

**Our school will be following all guidelines listed above.**

Classroom Teachers will be working with students to prepare them for the possibility of blended learning or full remote learning. All staff will be using Teams as the main platform for blended and remote learning. The use of Teams will allow for consistency amongst students, staff and parents.

Parents are asked to become familiar with Teams and ensure that they have access to Teams at home in order to support their child as needed.

If you require support with Teams, please contact your child's Teacher in September.

## Assessment & Reporting

Students' learning will be assessed on an ongoing basis to ensure that next steps are being appropriately planned for. Learning that occurs in classrooms or remotely will be assessed using good assessment practices that focus on the essential understandings of the curriculum. Additionally, students and parents/caregivers need to be aware that reporting continues to follow the guidelines and policies established by Manitoba Education and reflected in the following RETSD policies:

<https://www.retsd.mb.ca/yourretsd/Policies/Documents/IKAB.pdf>

<https://www.retsd.mb.ca/yourretsd/Policies/Documents/IKA-R.pdf>

<https://www.retsd.mb.ca/yourretsd/Policies/Documents/IKAF.pdf>

<https://www.retsd.mb.ca/yourretsd/Policies/Documents/IKAG.pdf>

### Joseph Teres Information

**Our school will be following all guidelines listed above.**

Our Student Led Conferences will be held virtually, until further notice, in order to limit the number of additional people in the building at any given time. The purpose of a student led conference with your child is to celebrate successes as well as discussing next steps your child can work on to improve as a learner. These days will be the same dates listed on our school website. If we can conduct student led conferences in person due to a change in recommendations from the province, we will notify families.

Our conference dates are November 25 (evening) and 26 (daytime), 2021 and March 17 (evening) and 18 (daytime), 2022.

## Subject Areas & Specialist Classes

All curriculum areas are important and build students' literacy and numeracy knowledge. Schools will continue to offer all subjects.

In senior years, students and caregivers need to be aware that there might be fewer electives and graduation plans will need to be revisited.

Programming options such as HSAP/community referenced instruction/ work experience /CareerBridge that involve programming that make take place outside of the building is permitted. Specific details will be provided regarding mask use as work place requirements may vary by sector.

### Extracurricular Activities

Activities are permitted based on established processes and must follow public health guidelines. In RETSD this requires cohorting to be maintained in K–6. Team practices can resume in Grades 7–12 and consideration of inter-school play is under review and will consider guidance from Manitoba High School Athletics Association and other partners.

Please know that we value the physical, mental and emotional health benefits of sport and will work diligently to ensure that our students can have access to those benefits. Schools will be working to build physical activity into the school day.

### Music Programming

Music programming is an important part of a well-rounded education. Music programming in RETSD will include:

- In Middle Years and Senior Years, singing is permitted so long as distancing is followed, and masks are worn.
- The sharing of music stands and sheet music is permitted, provided good hand hygiene practices are followed.
- Instruments, including accessories (e.g. drum sticks, mallets) should not be shared. If sharing instruments and accessories is required for equity purposes, then they will be thoroughly cleaned between users.
- In K–5, where students are not yet eligible to be vaccinated and instrument PPE is not available, RETSD is expecting that there will be no indoor singing or wind instrument use. Outdoor singing is promoted and acceptable when complimented by distancing.

### Joseph Teres Information

**Our school will be following all guidelines listed above.**

**Extra-curricular Physical Education and Music activities may be offered to cohort grade levels and/or classrooms.**

**Students in Grades 1 to 5 will all have personal music bags with some individual instruments to use. Other instruments may be used according to health recommendations, precautions and sanitization. Music will take place in our large Music room to allow for physical distancing. Choir will be done by grade cohort in a larger meeting space and/or by virtual opportunities to allow for physical distancing.**

## Student Specific Programming

As is the case for all students, students with additional needs from K–12 will be receiving in-class learning as prescribed by the province. Programming for students with additional needs may include a student specific plan, such as an Individual Education Plan (IEP) or an Adapted Education Plan (AEP). This collaborative planning will be led by the school team and, as needed, supported by divisional staff. If students with additional needs are not able to physically distance, provincial and divisional protocols will guide the necessary next steps.

## Joseph Teres Information

**Our school will be following all guidelines listed above.**

Student Services staff will plan, coordinate and facilitate these meetings with Classroom Teachers. Meetings that occur throughout the school year will be done virtually on Teams until further notice. Divisional Student Service personnel, including consultants and clinicians, will continue to be an active support to the planning process.

Page  
| 16

## Bring Your Own Device (BYOD)

To support the use of technology in teaching and learning, Bring Your Own Device (BYOD) guidelines will be in place for all students.

Encouraging students to use personal devices in classrooms:

- Supports the transition between in-class and remote learning
- Extends teaching and learning opportunities using technology
- Provides opportunity for modelling and teaching digital literacy practices that will be required for in-class and remote learning
- Limits the use of shared technology resources

Teachers, students, and parents should be aware of the BYOD guidelines and the related RETSD policies. This DOES NOT mean that student must have their own device. This approach allows students who have their own device to leverage its use in-class under the direction of the teacher.

RETSD BYOD Parent Guidelines:

<https://www.retsd.mb.ca/Lists/Publications/BYOD%20Parent%20FAQ%20Aug%202020.pdf>

RETSD BYOD Student Guidelines:

<https://www.retsd.mb.ca/Lists/Publications/BYOD%20Student%20guidelines%20Nov%202017.pdf>

<https://www.retsd.mb.ca/yourrets/Policies/Documents/GBEE.pdf>

<https://www.retsd.mb.ca/yourrets/Policies/Documents/IJND.pdf>

## Joseph Teres Information

**Our school will be following all guidelines listed above.**

Students can bring their own device to the school for learning purposes. Devices will only be used under the direction of the Teacher. Devices will remain in each student's backpack in the classroom (stored out of sight) until requested for use. Devices will not go outside for recesses or be used in the classroom during less structured times (indoor recess or lunch), unless under the direction of the Teacher. Students are asked to not take pictures with their personal devices on school property unless under the direction of the Teacher.

Please note as stated in the parent link above, students will be responsible for any lost, stolen or damaged personal devices just as they are for any other personal items they bring to school. The school division or the school is not responsible for any additional costs that may be incurred.

Student must follow digital citizenship guideline or privileges may be suspended.

Parents are asked to read and familiarize themselves with the parent and student guidelines noted above.

## Student Access to Devices & the Internet

To ensure all students are ready for a possible move to remote learning, **based on need, each school will identify students** who would benefit from being provided with loaner devices that are to be returned at the end of the school

year or before.

Students who were provided with a loaner device will be given the opportunity to purchase the loaner device at the end of the school year.

To ensure all students are ready for a possible move to remote learning, **based on need, each school will identify students** who would benefit from the opportunity to have the school division provide home internet access through BELL/MTS.

Parents/caregivers are advised to contact the school for support.

### **Joseph Teres Information**

**Our school will be following all guidelines listed above.**

Joseph Teres staff will work with families who are eligible for this support following the specific divisional guidelines.

## **Protocol for Shared Equipment**

Students can share equipment as needed however, it is imperative to ensure hand hygiene before and after use.

If possible, staff should limit the use of shared resources. When this is not possible, adequate, and appropriate cleaning must be available.

### **Joseph Teres Information**

**Our school will be following all guidelines listed above.**

All staff will work to maintain as much physical distancing as possible in all school settings. Classroom Teachers have reworked the physical space of their classrooms to allow for as much space between students as possible. Alternate spaces in the school may be used to increase physical distancing options. The use of these areas will be monitored and cleaned appropriately.

Some individual student use of materials will be possible (personal supplies, personal music instruments, etc.). Proper hand hygiene will be in place before and after the use of shared equipment and materials.

Classroom libraries will be in operation, with Teachers sending home books on a regular basis. Books from our general school Library will also be available.

## **Well-Being, Wellness & Supports Checks**

Student mental health and well-being is a core element of the re-opening planning. It is foundational in ensuring a return to a welcoming environment that supports learning. To this end, RETSD schools will utilize the expertise of parents/caregivers as it relates to their own children. Parents and caregivers know their children the best. To support all the adults supporting children, schools will consider these points:

- Communicate that no one has all of the answers about the impact of the pandemic, but that as a team, we can steer through the pandemic together
- Acknowledge that we need collaboration from adults to support the social-emotional impact of the pandemic on students
- Be open to the concept that students are returning to school with the weight of experiences that they might not have

shared yet

- Understand that students will only be as healthy as the adults around them
- Collaborate with parents/caregivers as a coordinated system that gives students hope

As adults we need to remember that children want to be heard. They do not need detailed information about events, but they do need to talk about their feelings. Let them know they can ask questions. We should answer questions honestly, but make sure that the information is suitable for their age level. If answers are not known, it is okay to say so and to look for resources together that can answer their questions.

Remember that children are often listening when others are talking about COVID-19. Adults should consider this and minimize discussions of COVID-19 that are not related to the specific setting. It is important for adults to correct any misinformation as they become aware of it.

We all need to reassure children that our schools are safe for children when they are consistently following preventative practices, including environmental cleaning, frequent hand hygiene, and routine screening.

Parent and student resources can be found at:

Taking Care of Yourself: [www.edu.gov.mb.ca/k12/covid/docs/mpsg\\_taking\\_care.pdf](http://www.edu.gov.mb.ca/k12/covid/docs/mpsg_taking_care.pdf)

Resources for Students and Adults: [www.edu.gov.mb.ca/k12/covid/docs/mpsg\\_resources.pdf](http://www.edu.gov.mb.ca/k12/covid/docs/mpsg_resources.pdf)

Kids Help Phone: <https://kidshelpphone.ca/>

Stress Hacks at: <https://stresshacks.ca/>

### **Joseph Teres Information**

**Our school will be following all guidelines listed above.**

Staff will be reviewing these guidelines with students in an age appropriate manner. Staff are fully aware that each child's social and emotional well being and overall wellness is especially important at this time. Our approach will be positive and proactive in nature as we aim to support all students in feeling safe and secure. Open, honest and consistent communication with your child's Teacher will always be key.

We ask parents to continue to partner with us in supporting the social, emotional and academic growth and success of their child. Please talk to your child about their school experiences and discuss guidelines to reinforce safety, health and expected behaviours. There may be routines that are challenging to get used to, but helping your child understand the reasons for the procedures will be most helpful. Focus on the positive and ask your child to share several highlights from their school day.

Please contact your child's Teacher with any questions or concerns. Our staff will work together with you to support your child.

## **COMMUNICATION**

### **Microsoft Teams**

All RETSD schools use Microsoft Teams as our teaching, learning and communication platform. Your child's teacher will be working, in the first weeks, to ensure that your child can access Teams so that should schools move to remote learning, your child is positioned to continue their learning. A parent support document for Teams can be found here:

<https://www.retsd.mb.ca/Lists/Publications/Family%20and%20Guardian%20Guide%20to%20Microsoft%20Teams%20>



## Joseph Teres Information

**Our school will be following all guidelines listed above.**

### Stay Informed

RETSD and your child's school are committed to keeping the community informed and engaged. At a divisional level, several structures have been established to support this communication:

Divisional Website—The RETSD divisional website has a section for COVID-19 updates that is clearly visible and regularly updated with any communication and documents. Parents are referred to the website through school communication.

<https://www.retsd.mb.ca>

Divisional Social Media Accounts—Current information is provided in a timely manner through Twitter and Facebook.

<https://twitter.com/RETSDschools>

<https://www.facebook.com/retsdb>

Divisional Letters—Regular information is provided to all families through letters that are branded with the divisional letterhead and signed by the Superintendent. These letters are distributed through the schools electronically or hard copies can be provided to families who request/require them.

Two-way communication—Parents and community members can provide feedback/questions/comments through the division or school websites Contact Us feature, Twitter and Facebook comments, regular surveys, through the school administrator and/or their elected school trustee.

At a school level, the following structures support communication:

- School websites
- School social media
- School letters
- School telephone dialers
- Teacher/family communication

## Joseph Teres Information

**Our school will be following all guidelines listed above.**

**Our school staff will communicate with parents in the following manners: phone, email, mass school wide emails, school website, school calendar on the school website, newsletter, and Teacher/family communication. Parents are encouraged to check the school website regularly.**

### Concern Protocol

Your child's school will always try to make the learning experience a positive, safe and happy one for its students. However, if you have a concern or an issue, please don't hesitate to let the school know. Open communication between home and school is very important to us. In the event you have a concern, please follow the process below:



- a. Talk to the person most directly involved—your child’s teacher. If you must leave a message, provide a day and evening phone number where the teacher can reach you.
- b. If talking to the teacher doesn’t resolve the issue, talk to the principal.
- c. If you’ve talked to the principal, but the issue has not been resolved over a period of time, call the superintendent’s department at 204.667.7130 or email [communications@retsd.mb.ca](mailto:communications@retsd.mb.ca).
- d. If you disagree with the decision of the superintendent’s department, you can make an appeal in writing to the board of trustees.

Policy KE–Concern Protocol: <https://www.retsd.mb.ca/yourretsd/Policies/Documents/KE.pdf>

Policy KE-R–Concerns and Complaints Process: <https://www.retsd.mb.ca/yourretsd/Policies/Documents/KE-R.pdf>

### **Joseph Teres Information**

**Our school will be following all guidelines listed above**

# What Should I Do if My Child is Sick?



Students should stay home from school if they are sick, no matter how mild the symptoms. If your child comes to school with any COVID-19 symptoms, the school will immediately isolate the student and call parents to pick them up.

If students have one symptom from the Column A or two from Column B, they should immediately get tested for COVID-19.

## Column A

Do you have a new onset, or worsening, of any ONE of the following symptoms?

- Fever > 38°C or think you have a fever or chills
- Cough
- Sore throat/hoarse voice
- Shortness of breath/breathing difficulties
- Loss of taste or smell
- Vomiting or diarrhea for more than 24 hours

## Column B

Do you have a new onset, or worsening, of any TWO of the following symptoms?

- Runny nose
- Muscle aches
- Fatigue
- Conjunctivitis (pink eye)
- Headache
- Skin rash of unknown cause
- Nausea or loss of appetite
- Poor feeding (if an infant)

## When Can My Child Return to School?

If your child gets tested for COVID-19 and is:



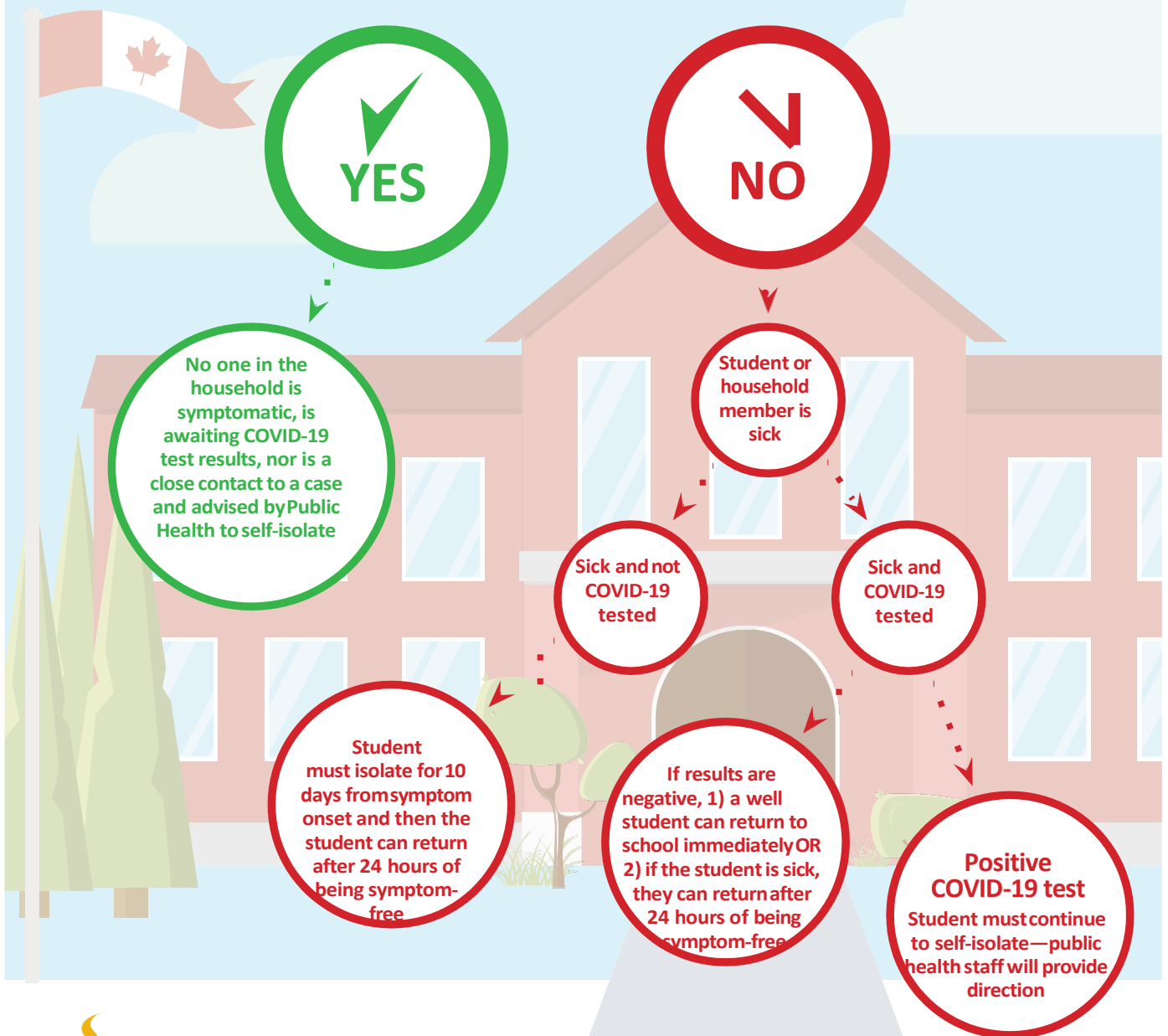
**Negative:** They can return to school after 24 hours of being symptom-free.



**Positive:** Public Health will provide guidance regarding what is required before your child can return to school.

If your child is sick and you decide not to get tested for COVID-19 the student must self-isolate for 10 days from symptom onset plus 24 hours of being symptom-free before returning to school.

# When Can Students Attend School?



# *creating student success*

589 Roch St., Winnipeg, MB R2K 2P7 | Tel: 204.667.7130 | Fax: 204.661.5618 [www.retsdb.ca](http://www.retsdb.ca)  
*For questions and comments, please contact the RETSD communications department. ©2021*

*This publication is available in alternative formats upon request.*

