



# Welcoming Students Back

*2021–22 Parent & Community Information*

**Donwood School**

---



*This plan is dynamic. The division will continue to re-work and make adaptations as new information and guidelines become available.*

*(A record of updates is on the inside cover)*

This is a living document and will be updated regularly to ensure it remains current.

## **RECORD OF DOCUMENT REVISIONS:**

**August 17, 2020**

Initial publication

**September 1, 2021**

Version 1.10

All sections updated to reflect Fall 2021 re-opening

**September 1, 2021**

Donwood School updates

# Message from our Superintendent

In August 2021 Manitoba Education announced the plans for the reopening schools in Manitoba: Restoring Safe Schools 2021–2022: [https://manitoba.ca/asset\\_library/en/covid/k12-guidelines-aug2021.pdf](https://manitoba.ca/asset_library/en/covid/k12-guidelines-aug2021.pdf)

The provincial document summarizes the plan for reopening schools in the fall of 2021, which includes:

- Ensuring a safe and healthy environment for all students and staff
- Having all students in class full-time
- Continuing to implement public health fundamentals (self-screening, hand hygiene and staying home when sick)
- Monitoring and implementing additional public health measures and contingency planning, as needed, to address changes in local community or school epidemiology
- Shifting towards addressing the impacts the pandemic has had on the mental health, well-being and learning of students and the school community

With the acknowledgement that we will be living with COVID-19 for the foreseeable future, it is in the best interest of children to be in school, and we must lessen the risks of COVID-19 for students and families to ensure that learning continues for all. In RETSD we will support this by requiring masks for all staff, students and visitors.

Manitoba Education, along with River East Transcona School Division, will continue to work closely with public health, parents, caregivers and students.

In RETSD, and across Manitoba, in-class learning will resume for all students in kindergarten to Grade 12 on September 7, 2021.

Schools in RETSD continue to plan for a safe return to learning for all students and staff. We know that families have many questions and concerns regarding the start of school. Some of these questions will be best answered by your school directly as each school may have some school-specific information for parents and students.

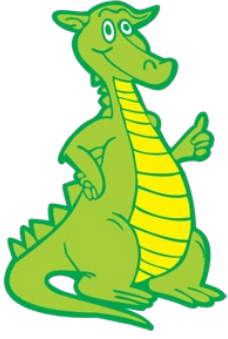
As well, Manitoba Education has created a guide for parents and caregivers that can be found at: Restoring Safe Services: [https://manitoba.ca/asset\\_library/en/covid/k12-GuideForParents-aug2021.pdf](https://manitoba.ca/asset_library/en/covid/k12-GuideForParents-aug2021.pdf)

This plan has been updated based on the current **Pandemic Response Level Yellow—Caution**. Please note: In all cases, except for brief encounters, all staff and students are expected to maintain two-metre distancing person-to-person to the greatest extent possible.

RETSD remains committed to working with parents and caregivers as we navigate the return to school. You are entrusting us with your most valuable commodity, your child. By working together, we are confident that your child will experience the best possible return to school.



Kelly Barkman  
Superintendent/CEO  
River East Transcona School Division



## Message from Donwood Administration

Welcome students and families of Donwood School to the 2021-2022 school year. Our staff have been very busy preparing for the return of students to in class learning and we look forward to welcoming them back on Wednesday, September 8<sup>th</sup>, 2021, Day 2 of the school day cycle.

In preparation for the new school year, we have reviewed our opening plan from the previous school year and made appropriate revisions based on the directive from the division who is working closing with Manitoba Education and public health. As a result, many previous routines and procedures will need to remain in place to optimize the safety, health, well-being and learning of our students. Some new guidelines have been implemented while some restrictions have been removed. We ask for your cooperation and understanding as we return to school routines and we navigate through any of the changes. It is impossible to have all the right answers and we know that there may need to be adjustments made based on a variety of factors as we continue to keep up to date with divisional and provincial guidelines. As a school team, we will continue to look at any areas of concern and adjust accordingly. We appreciate your patience, and we value your partnership with us as we navigate the return to school.

Please review the following information carefully to help prepare your child(ren) for the return to school. This document includes the information from the divisional document along with Donwood's school specific information in **green text**.

If you have questions or concerns, you can communicate in the following ways:

1. Contact your child's Classroom Teacher through email for classroom-based questions. (Email addresses are the first initial of the teacher's first name, then the teacher's last name followed by @retsd.mb.ca)
2. Send your questions or concerns to our school website at [don@retsd.mb.ca](mailto:don@retsd.mb.ca)
3. Call the school office at 204-668-9438
4. Contact the Administrative team for general questions or concerns:

Mrs. Darlene Martineau (Principal) – [dmartineau@retsd.mb.ca](mailto:dmartineau@retsd.mb.ca)

Mrs. Carla Williment (Vice Principal) – [cwilliment@retsd.mb.ca](mailto:cwilliment@retsd.mb.ca)

# TABLE OF CONTENTS

## SCHOOL PREPAREDNESS

School Access, Community Use & Entry Process .....	1
Classroom Transition, Cohorts, Student Movement Plans .....	2
COVID-19 Signage .....	2
Transportation .....	4
Self-Screening, Symptom Monitoring Process & Personal Hygiene .....	5
Use of Personal Protective Equipment (PPE) .....	6
Protocol for Students Who Exhibit Symptoms.....	7
Protocol if there is a Positive Case in the School .....	7
Cleaning & Sanitization Schedule.....	7

## SCHOOL ROUTINES

School Physical Setting.....	8
Student Attendance .....	8
Timetable .....	8
Recess.....	9
Lunch Hour .....	9
Play Structures .....	11
Assemblies .....	11
Field Trips.....	11
Volunteers .....	11

## TEACHING, LEARNING & WELL-BEING

In-Class Learning .....	12
Returning to in Class Learning .....	12
The Possibility of Remote Learning.....	13
Assessment & Reporting.....	13
Subject Areas & Specialist Classes .....	14
Student Specific Programming .....	14
Bring Your Own Device (BYOD).....	15
Student Access to Devices & the Internet .....	15
Protocol for Shared Equipment .....	16
Well-Being, Wellness & Supports Checks .....	16

## COMMUNICATION

Microsoft Teams.....	17
Stay Informed.....	17
Concern Protocol .....	18

## ADDITIONAL INFORMATION

What Should I Do if My Child is Sick? (poster).....	19
When Can Students Attend School? (poster) .....	20

# SCHOOL PREPAREDNESS

## School Access, Community Use & Entry Process

Restricting access to buildings is a strategy to reduce the probability of an infected person entering the school. All RETSD buildings are implementing a monitored access system for the start of school. This means all **parents or visitors MUST report to the office upon entering the school**. All parents or visitors are expected to use the self-screening tool prior to coming to the school. To help protect the health and safety of everyone, non-medical cloth masks are mandatory for any parent or visitor who needs to enter the school. Everyone (including all students and staff) are required to wear a mask when in a school or other RETSD building or bus.

Whenever possible, parents, visitors or caregivers are asked to email or call the teachers, school or administrators when you need to talk as opposed to coming to the school. While schools are open, parents are encouraged to continue the practice of only supporting essential in-person visits.

Access to the school is limited. **Clear directions will be provided in each school for entry, exit and movement within the school. Everyone who enters an RETSD facility MUST monitor for symptoms and exposure.** This responsibility resides with the person or their parent/caregiver. Monitoring is to be done using the COVID-19 Shared Health Screening Tool at: <https://sharedhealthmb.ca/covid19/screening-tool/>

**Hand sanitizing stations will be set up at the main entrances of schools.** Everyone entering the school should sanitize their hands.

Keeping potentially sick or infected or symptomatic people out of the building helps reduce the probability of community-based transmission of the virus. **Any person who exhibits signs and symptoms of illness are asked not to enter the facility and to seek applicable health testing.** Additionally, all schools have an identified space to isolate students who display COVID-19 symptoms.

While community user groups, and school use permits can resume, the exact details of RETLife, City of Winnipeg programming and other community users will be determined as the year progresses and school needs are determined.

Contact information for all visitors and community users MUST be maintained for contact tracing purposes and all divisional and public health guidance/direction related to COVID must be followed (including mask wearing).

## Donwood School Information

### Our school will be following all guidelines listed above

**Access to the school will be limited. Please call or email when you need to talk to a staff member. If you need to come to the school, please call the school at 204-668-9438 to make an appointment or to have a staff member meet you at the front doors (this information is also posted on the front entry doors). All parents, guardians and visitors must self-screen before entering and wear a mask if you need to enter the building. Please sanitize your hands at the front entrance area. All visitors to the school will be logged.**

**If a student needs to be picked up during the school day, our clerks will call into the classroom for the child to come down to the office. This practice reflects our usual practice at Donwood School and will also support limiting the number of additional people in our building. Notifying your child(ren)'s classroom teacher and our office staff in advance will ensure this process is done quickly and efficiently. If your child is going to be absent or late, parents/guardians are asked to notify the school before 8:45 am or before 12:45 pm by calling the school office voicemail at 204-668-9438. A message can be left on the answering machine during off hours. As a safety measure for our students, a "Call Back" program is in place. If a child is absent and the school has not been notified of the absence, we will call the parent/guardian as soon as possible to ensure student safety.**

## Classroom Transition, Cohorts, Student Movement Plans

**RESPONSE LEVEL YELLOW—CAUTION**—In-class learning will resume for all students on September 7, 2021. **Cohorts remain in place for K–8. Except for brief encounters, all staff and students are encouraged to maintain two metres distancing person-to-person to the greatest extent possible.**

The movement of people within a school will be minimized as much as possible and it is critical to maintain physical distancing as much as possible.

Cohorts involve keeping groups of students together and avoiding interactions with other groups. Physical distancing within the cohort is encouraged to the greatest extent possible. Given the full return of students to in school learning, it is understood that in many cases 2 metre distancing may not be attainable nor practical in the school setting. The purpose of cohorts is to limit the mixing of students and staff so that if a child or employee develops an infection, there are fewer possible exposures and contact tracing can be more efficient. Cohorts are required for K-6 and in RETSD given that cohorts were planned for in the spring, to the greatest extent possible, we will maintain cohorts through to grade 8. It is understood that there will be variability and exceptions in grade 7 and 8 however these should be limited.

All pedestrian traffic inside the facility should follow the same concepts as the “rules of the road” and the directional markers. People briefly passing one another in hallways without six feet of physical distance is not considered high risk but will be minimized by staggered/staged starts and exits at each school. Whenever possible when cohorts are in place, different entry/exit times are being scheduled. Whenever possible in K-8, students are to enter the school upon arrival to ensure they are staggered and will be released in a similar manner at the end of the day

## COVID-19 Signage

Manitoba Health has provided a variety of signage that is posted in all schools to communicate public health best practices. See them at: <https://www.gov.mb.ca/covid19/updates/resources.html>

Additionally, RETSD will be providing all schools with divisionally branded mask requirement signage.

## Donwood School Information

**Our school will be following all guidelines listed above.**

**We have created cohorts within our school and have implemented a plan that includes a staggered start to the day, staggered recesses, adjustments to the lunch hour and a staggered exit at the end of the day. By creating cohorts and monitoring the number of students entering and exiting the building at any one time we hope to prevent the risk of exposure.**

**Within the larger cohorts, each hallway has been divided into grade level cohorts. Each grade level cohort (A-C) will have a designated play zone in the playground to prevent mixing with other grade level groups within the larger cohort. Each hallway will also have a designated exit/entrance.**

**The schedule below indicates the cohort assignment and the allotted time for staggered entrance and exit. All of Cohort 1 (A-C) will arrive at 8:45 am at their designated entrance and leave at 3:25 pm from their designated exit. All of Cohort 2 (A-C) will arrive at 8:55 am at their designated entrance and leave at 3:35 pm from their designated exit.**

**\* As in previous years, kindergarten students will have a staggered start to the school year.**

**Even Day: Half the class on the 8<sup>th</sup>, the other half on the 10<sup>th</sup>, full day on the 14<sup>th</sup>**

**Odd Day: Half the class on the 9<sup>th</sup>, the other half on the 13<sup>th</sup>, full day on the 15<sup>th</sup>**

**The schedule below indicates the cohort assignment and the allotted time for staggered entrance and exit:**

**Cohort 1: (Start Time: 8:45/End Time: 3:25)**

**South East Exit (Cohort A)**

Kindergarten – Harris

Kindergarten – Pott (Even) and Friesen (Odd)

\*(Pott/Friesen (K) will start at 8:55 and exit at 3:35)

**South West Exit (Cohort B)**

Grade 1/2 – Penner

Grade 1/2 – Northcliffe

Grade 1/2 – Bargaen

**North East Exit (Cohort C)**

Grade 3 – Rosenby

Grade 4 – Mose

Grade 5 – Wurmman

**Cohort 2: (Start Time: 8:55/End Time: 3:35)**

**South West Exit (Cohort A)**

Grade 1/2 - Schroeder

Grade 1/2 – Bretecher/Feuer

**North West Exit**

Grade 1/2 – Koehn/Bretecher

Grade 1/2 – Glabush

**North West Exit (Cohort B)**

Grade 3 – Degen

Grade 3 - Johannesson

**North East Exit (Cohort C)**

Grade 4/5 – Laurin

Grade 4/5 - Taylor

Grade 4/5 – R. Klassen

**Start-Up:**

Upon arrival to the school at your designated start time (see above), please proceed to the back of the school and find your teacher.

- Grade 3 Rosenby, Grade 4/5 and kindergartens will find their teachers waiting on the basketball court.
- Grade 1 – 3 will find their teachers on the tarmac.

Once students have located their teachers, they will be given directions to safely enter the school. To ensure a staggered start, we ask that students not arrive prior to their designated start time. Students will sanitize upon entry into the building.

Floor markings will indicate the directional flow of traffic and designated waiting spots. Staff will be teaching and reinforcing the expectations regarding traffic flow in the school. This is part of our regular school start up and will continue to be done with increased frequency this year. Posters are also displayed throughout the school to remind students of physical distancing, handwashing, cough and sneeze protocol, mask wearing and other expectations and guidelines. Parents are encouraged to reinforce these expectations at home. Physical distancing within the cohort is encouraged to the greatest extent possible. As previously mentioned in the divisional plan, with the return of all students to in class learning, it is understood that in many cases 2 metre distancing may not be attainable nor practical in the school setting. The purpose of cohorts is to limit the mixing of students and staff so that if a child or employee develops an infection, there are fewer possible exposures and contact tracing can be more efficient.



## Transportation

**RESPONSE LEVEL YELLOW—CAUTION**—Buses will be running at regular capacity and assigned seating is an expectation. Fee- for-service will not be offered until such time as ridership and capacity are determined.

While drivers will wear a disposable medical mask, all school bus passengers are required to wear a non-medical mask. These masks should be put on before getting on the bus and taken off after exiting the bus, if removal is appropriate for the setting.

To accommodate limitations to wearing a mask at school or on a school bus, information regarding the child's limitations to wearing a mask must be provided to the school. While a medical note is not required, details such as the date a parent/ guardian consulted with a health-care provider regarding their child's ability to safely wear a mask, and your child's medical limitations with wearing a mask, is required. Please see the school for the necessary documentation.

For those who would like to use a face shield, it must be done in combination with a face mask. A face shield is not a replacement for a non-medical mask.

For more details about face mask exemptions, see the linked document:

Guidance for Mask exemptions in Schools: [https://www.edu.gov.mb.ca/k12/covid/docs/mask\\_exemption.pdf](https://www.edu.gov.mb.ca/k12/covid/docs/mask_exemption.pdf)

## Donwood School Information

**Our school will be following all guidelines listed above.**

**To assist in making student drop off and pick up as safe as possible, if you are driving your child(ren) to school, please consider talking to your child about a regular pick up or drop off location utilizing the streets adjacent to the school. The school parking lot will NOT be accessible as a drop off/pick up zone. We also ask that students utilize the patrols to safely cross the streets and that parents adhere to the no parking zones in front of the school which includes the bus loop. Please ensure that your child(ren) are aware of where you will be meeting them each day. We recommend selecting a regular location to help increase your child's comfort level with the staggered dismissal times. If you choose to pick up your child at the end of the day instead of taking the bus home, please notify the school and plan a designated spot ahead of time so your child knows where to meet you. Please remember safety over convenience.**

**Our school does have bike racks for student use. Students must lock up their bike to the bike rack. Please ensure that your child knows how to lock and unlock their bike.**

## Self-Screening, Symptom Monitoring Process & Personal Hygiene

Students must stay home if sick or displaying symptoms. Monitoring for symptoms and exposure is to be done using the COVID-19 Shared Health Screening Tool. Symptoms may include:

- Cough
- Headache
- Fever/ chills
- Muscle aches
- Sore throat/ hoarse voice
- Shortness of breath/ breathing difficulties
- Loss of taste or smell
- Vomiting, or diarrhea for more than 24 hours
- Runny nose
- Fatigue
- Nausea or loss of appetite
- Conjunctivitis (pink eye)
- Skin rash of unknown cause

See a more detailed description on the RETSD website: <https://sharedhealthmb.ca/covid19/screening-tool/>

Public health orders are to be followed in all schools. To reduce the risk of infection from COVID-19, students and visitors are expected to take common prevention measures, including regular handwashing with soap and warm water for at least 15 seconds. Dry hands thoroughly. An alcohol-based hand cleanser can be used if your hands are not visibly dirty and soap and water are not available.

It is especially important to clean your hands:

- After coughing or sneezing
- When caring for a sick person
- Before, during and after you prepare food
- Before eating
- After toilet use
- When hands are visibly dirty

You should also cover your mouth and nose with a tissue when coughing or sneezing, or you can cough or sneeze into your sleeve. Throw used tissues in the garbage and immediately wash your hands or use an alcohol-based hand cleanser.

<https://www.gov.mb.ca/covid19/prepareandprevent/index.html>

## Use of Personal Protective Equipment (PPE)

**RESPONSE LEVEL YELLOW—CAUTION—Please be assured that all staff who are working across cohorts or schools MUST wear disposable medical masks.**

Masks offer an added layer of protection. All students, teachers, staff and visitors are mandated to wear a non-medical mask in all schools, other RETSD buildings and buses. Extra masks will be made available at all schools, sites and buses throughout the school year for those who do not have their own.

**While mask breaks will be permitted at appropriate times (when seated and/or eating), masks are to be worn by students in all indoor school environments including during physical education. Masks can be removed when students are outdoors and consistently maintaining distancing. Teachers can have a station in physical education where students can briefly take off their mask indoors provided distancing is maintained and there is limited/no movement.**

Parents are strongly encouraged to talk to their children about how to wear a non-medical mask. To put on a mask safely, perform hand hygiene. Place the mask on the face carefully so it covers your mouth and nose, handling it with the strings or elastic ear loops as much as possible, and mould the nose bridge to ensure it does not move while it is on. Avoid touching the mask once you have put it on. If the mask needs to be adjusted, hands should be cleaned before and after adjusting the mask. Never pull the mask down below the nose, mouth or chin. Never dangle the mask from one ear or both ears. To remove the mask safely, remove it from behind using the strings or elastic ear loops. Do not touch the front of the mask. Perform hand hygiene after removing the mask. Non-medical masks should be laundered daily.

Some students might require specific interventions or supports that cannot be delivered from a distance. Precautions related to these types of supports vary depending on the needs of the individual student. School staff will be in contact with the families of students who may require this support while at school.

Staff must wear non-medical masks and may wear PPE as appropriate and where physical distancing cannot be maintained in order to support additional student needs.

To accommodate limitations to wearing a mask at school or on a school bus, information regarding the child's limitations to wearing a mask must be provided to the school. While a medical note is not required, details such as the date a parent/guardian consulted with a health-care provider regarding their child's ability to safely wear a mask, and your child's medical limitations with wearing a mask, is required. Please see the school for the necessary documentation.

For those who would like to use a face shield, it must be done in combination with a face mask. A face shield is not a replacement for a non-medical mask. For more details about face mask exemptions, see the linked document: Guidance for Mask exemptions in Schools: [https://www.edu.gov.mb.ca/k12/covid/docs/mask\\_exemption.pdf](https://www.edu.gov.mb.ca/k12/covid/docs/mask_exemption.pdf)

## Donwood School Information

**Our school will be following all guidelines listed above.**

**Students and staff will be engaging in regular handwashing throughout the school day. As mandated, all students, teachers, staff, and visitors are required to wear a non-medical mask in all schools. Extra masks will be made available in the school office. Parents are strongly encouraged to talk to their children about how to wear a non-medical mask; to put on and remove a mask safely, as well as perform hand hygiene. Non-medical masks should be laundered daily. Masks can be removed when students are outdoors and consistently maintaining distancing. While mask breaks will be permitted at appropriate times (when seated and/or eating), masks will be worn by students in all indoor school environments including during physical education unless outdoors where physical distancing can be maintained. Teachers can have a station in physical education where students can briefly take off their mask while maintaining distancing.**

## Protocol for Students Who Exhibit Symptoms

If a student develops symptoms while at school, they will be isolated in a predetermined isolation space. Where a separate room is not available, students will be kept at least two metres away from others. A mask will be provided for and worn by the child exhibiting symptoms (noting masks are required by everyone in schools and other RETSD buildings). The student's parent/caregiver will be notified to come and pick them up immediately and instructed to call Health Links at 204.788.8200 or 1.888.315.9257.

A sick child can return to the school (*What Should I Do if My Child is Sick?, When Can Students Attend School?*) once it has been determined that it is safe to do so by their health care provider or public health. If that child has a positive test, further direction will be provided by public health.

## Protocol if there is a Positive Case in the School

In the event of a confirmation of a case of COVID-19 connected with a class, public health will lead the response and provide guidance. Public health will advise staff and students if they have been in close contact, if they need to self-isolate or self-monitor and when they can return to school.

Decisions about school or class closures will be made on a case-by-case basis with public health leading the response and providing guidance.

Classroom teachers will support the development and provision of at-home learning packages for students who are isolating or quarantined as directed by public health.

## Cleaning & Sanitization Schedule

RETSD has worked diligently to develop a cleaning and sanitizing plan for the re-entry of students. School custodial staff are aware of and are implementing this plan. To increase cleaning and sanitation, we are:

- Cleaning and disinfecting with a focus on high-touch surfaces and common areas, however frequency can return to normal practices. Washrooms are the exception, as they require more intensive cleaning.
- Providing hand sanitizer in all areas of the schools as required
- Ensuring adequate supply of liquid soap and hand towels in all locations. Ensuring all air hand dryers are in working order
- Procuring disinfectant wipes for IT equipment to ensure shared devices are cleaned in between users

## Donwood School Information

**Our school will be following all guidelines listed above.**

**Please ensure that student contact information, including your emergency contacts, is accurate. Verification reports will be going home the first day to update contact information. You will be asked to provide 4 emergency contacts. Schools can require students with symptoms to stay home. If you or your emergency contact is called to the school to pick up your child, please plan to come to the school promptly to reduce the risk of exposure to others. You may wish to pick up all your children at that time, as a proactive measure to ensure your child's good health. Please talk with your emergency contact to remind them that they may be called upon.**

**It is important to use the self-screening tool daily prior to student arrival at school. If a student develops symptoms while at school, they will be isolated in our sick room in the office. A mask will be required to be worn.**

**School Administration and custodial staff will be in regular consultation to ensure proper cleaning and sanitization of the school building.**

# SCHOOL ROUTINES

## School Physical Setting

As per the messaging from the Chief Public Health Officer of Manitoba, schools are safe. Each classroom has been provided with sanitizer to help ensure cleanliness throughout the day. Additionally, soap and water are readily available throughout the schools. Common spaces are subject to more frequent cleaning by school custodial staff. In order to help maximize safety, water fountains that are not touchless are closed off or bagged so that they cannot be used. Bottle re-fill stations will continue to be available. Students must supply their own bottle, and these should not be shared.

## Donwood School Information

**Our school will be following all guidelines listed above.**

**Our water fountains, which are not touchless, have been closed off and bagged so that they cannot be used. We did purchase a bottle filling station last year that is located outside the gym doors. We will also have a water cooler available in the front office. Students are asked to bring their own labelled bottle of water to school, and these should not be shared. We recommend that you send extra water for your child each day.**

## Student Attendance

Students are expected to attend in-class learning and fully participate even if remote learning is required at some point. Each school will work collaboratively with parents/caregivers to support learning for students who are medically advised not to return to school and provide the required medical documentation.

Schools will provide reasonable accommodation for students who have medically complex conditions based on a recommendation of limitations provided by a health-care provider for these students to not attend school. A medical note is required and helpful in better understanding the specific accommodation, as well as preparing for the safe return of the child to school as per regular school practices in supporting students with health needs (not specific to COVID-19).

Families who choose to educate their children at home can find more information about homeschooling by contacting:

### Homeschooling Office

#### Manitoba Education and Training

1567 Dublin Ave.

Winnipeg, MB R3E 3J5

Phone: 204.945.8138

Email: [homeschooling@gov.mb.ca](mailto:homeschooling@gov.mb.ca)

**Please notify the school if you are planning to homeschool your child.**

## Timetable

The below noted timetable descriptions are general in nature. School-specific information will be available from your child's school beginning on August 23, 2021 (please contact the local school office as schools will open at varying dates).

**Our Donwood School office reopens on Monday, August 30<sup>th</sup>, 2021**

## Early Years

**RESPONSE LEVEL YELLOW—CAUTION—In-class learning resumes for all students. Cohorts remain in place. Except for brief encounters, all staff and students are encouraged to maintain two-metre distancing person-to-person to the greatest extent possible.**

For the most part, timetables will stay as is. This schedule respects the required cohorting of students. Schools will provide all students as much time as possible for structured physical activity, outdoor experiences, and arts education.

Staggered/staged starts and exits are expected. Different entry/exit times will be scheduled based on cohorts. While it is discouraged, students who arrive at school prior to the designated entry time are to wait, using physical distancing, on the schoolyard in their cohort's assigned area. Staff will bring students into the school based on their staggered entry plan.

## Donwood School Information

### Our school will be following all guidelines listed above

For the most part, the timetable will stay as is. Each hallway is divided up into two cohorts of students. Adjustments have been made to the start/end of the school day for each cohort as well as the start/end of recess. Adjustments have also been made to the lunch hour. There will be no student activities that cross cohorts (reading buddies, SLCs, etc.). Classroom Teachers may choose to use outdoor learning areas with their students. Please have students dress appropriately for outdoor weather each day.

There will be no large, combined classes for Choir. Entry and exit into Music class will be through two different doors. The teacher may also support social distancing by picking students up for music class.

Physical Education will take place in the gym and outside. There will be no changing of clothes for Physical Education classes. Please dress in comfortable clothes to allow for free and easy movement. Please dress for the weather as well as Physical Education class will often be outside. Entry and exit into Physical Education class will be through two different doors. Teachers may also support social distancing by picking students up for gym class.

## Recess

### Early Years

Recess is an important part of child development. Play, structured and unstructured, is central to student well-being. Recognizing this, recess will be maintained. To ensure the additional physical distancing measures and cohorting are supported, staggered recess schedules have been established at each school to ensure safety. An outdoor space has been designated for each class.

### Lunch Hour

Students who normally go home for lunch will continue to do so. Upon returning to school, students will follow the appropriate school guidelines for accessing the schoolyard, designated areas, and school entry.

Students who stay at school for lunch will eat lunch in their cohort classroom. Food must not be shared, and students are to supply their own food and utensils. Microwaves will not be available. Outdoor times will be scheduled for all cohorts.



## Lunch Supervision Programs (Early Years)

User pay lunch supervision programs will continue to operate. Programs will exercise a higher degree of attention to cleanliness. Students will eat lunch in their cohort classroom. School administration and parent lunch committees are in regular contact to co-ordinate plans and support student safety.

## Donwood School Schedule

**Our school will be following all guidelines listed above**

### Entrance:

Cohort 1 (A-C): 8:45 am

Cohort 2 (A-C): 8:55 am

### AM Recess:

Cohort 1 (A-C): 10:05 – 10:20 am

Cohort 2 (A-C): 10:25 – 10:40 am

### Lunch/Recess:

Cohort 1 (A-C): 11:45 am (recess/lunch in classrooms)

Cohort 2 (A-C): 11:45 am (lunch in classrooms/recess)

### PM Recess:

Cohort 1 (A-C): 1:50 - 2:05 pm

Cohort 2 (A-C): 2:10 – 2:25 pm

### Dismissal:

Cohort 1 (A-C): 3:25 pm

Cohort 2 (A-C): 3:35 pm

Each cohort group will have a designated play area for outdoor recess time. Play zones will be rotated throughout the school cycle to allow for different play options. All staff will support students in knowing their designated area. Each classroom will have their own designated recess equipment. Students will wash or sanitize their hands several times throughout the day, particularly before and after recess and lunch, using staggered schedules.

Personal items such as toys, stuffed animals and sports equipment should stay at home. During this time of COVID-19, we would like to ensure that additional items are not brought to school, unless requested by the Classroom Teacher.

### **Hot Lunch Programs:**

Hot lunch programs may continue. Only school staff will handle, prepare, and serve food, following all safe food handling protocols. In all cases, it is critical to ensure proper hand hygiene practices.

### **Breakfast & Snack Programs:**

Recognizing the important role that schools play in the overall health and well-being of students, where possible, breakfast and snack programs will continue. Schools should carefully consider and where possible, limit the number of external personnel who come into the school to support these programs. All visitors must sign in and are required to wear masks.

## Donwood School Schedule

### **Our school will be following all guidelines listed above**

**For lunch, Cohort 1 (A-C) will go outside the first half and eat the second half of lunch. Cohort 2 (A-C) will eat first half and go outside the second half of lunch.**

**Students who go home for lunch should be returning just prior to the end of lunch bell (12:45) and must go directly to their cohort's assigned location upon returning to school.**

**Administration and Lunch Coordinators will be in regular communication regarding the lunch program and its operations. Lunch Supervisors will work with as minimal cohorts as possible.**

**We are looking at the possibility of offering individually packaged Hot Lunches this school year.**

**School staff will offer a modified Breakfast Program. Students will need to be enrolled in the program to participate. Information will be sent home once the program is set to begin.**

### **Play Structures**

Public health advises that playgrounds and play structures are low risk for transmission. There are no specific requirements for cleaning play structures. All play structures and swing sets are open.

### **Assemblies**

While assemblies and gatherings are permitted, whole school student assemblies and gathering are not being permitted in RETSD. Smaller grade-specific or cohorted assemblies are recommended. For K-6, cohorted gatherings, as opposed to larger whole school gatherings are expected.

### **Field Trips**

All field trips/out of school excursions are permitted as long as the activities follow current public health recommendations and orders at the time.

While the recent Public Health orders permit overnight camps in cohorts up to 15, in RETSD, overnight trips remain prohibited. This is subject to change.

**Field trips that follow all public health guidelines will be allowed this year including community-based walking trips that allow for the use of outdoor learning spaces which can accommodate the physical distancing requirements.**

### **Volunteers**

Since we are in the early stages of re-opening, volunteers will not be permitted. Guest speakers and presenters are encouraged to be accessed electronically. If this is not feasible, providing all Public Health guidelines are adhered to, and the presenter is directly linked to curriculum (this is inclusive of student-specific programming and well-being supports), they can attend the site. All visitors and volunteers must adhere to self-screening, physical distancing, and recommended hygiene practices. Visitors or volunteers with any symptoms consistent with COVID-19 should not enter the school. Schools will keep a list of all visitors. To help protect the health and safety of everyone masks are mandatory for everyone in RETSD schools, buildings and buses.

**Several special programs and events are run by or count on the assistance of dedicated volunteers and will need to be suspended or modified at this time including but not limited to: Breakfast program volunteers, Discovery Time. We will continue PAC meetings using a virtual platform.**



## TEACHING, LEARNING & WELL-BEING

### In-Class Learning

As has been directed by Manitoba Education, in-class learning will occur with additional public health measures. While the educational programming will continue to be best practice, some logistical changes may be necessary. These changes will include:

- Requiring masks. Mask wearing will be especially important any time students are not seated or are engaged in group work or one-on-one interactions with a staff member. RETSD views mask wearing as an important strategy to support health and safety of all as well as a key to the re-introduction of collaborative group learning experiences that have been impacted by the pandemic.
- Maintaining social distance and hygiene within the classrooms
- Cohorting students in kindergarten to Grade 8

**RESPONSE LEVEL YELLOW—CAUTION—Given that to the greatest extent possible a two-metre distancing requirement is desirable and encouraged within the parameters of all students engaged in in-school learning, schools will be aggressively ensuring that excess furniture is removed from classrooms to support the distancing. The division has provided schools and maintenance staff with detailed instructions to achieve this.**

### Returning to In-Class Learning

Recognizing that students are returning to school with more varied learning experiences than usual, all schools are planning to support students with learning as needed.

Learning is not a one-time event. It will be viewed as an ongoing process throughout the school year. Learning gaps will be identified and monitored. To support on-going learning, your child's teacher will employ the following approaches:

- Initial assessments will be conducted to provide a starting point for teachers; however information will continue to be collected
- Teachers will plan for instruction using this information
- Students will be provided with a variety of opportunities to learn and to demonstrate understanding
- Teaching will be focused on goals of building independence and self-motivation so that students have the skills to move to remote learning if required
- Recognizing the uncertainty of the situation, teaching will be planned to ensure that learning continuity is in place for students should further disruptions arise
- The focus of learning will be on understanding, not assignments

### Donwood School Information

**Our school will be following all guidelines listed above.**

**School staff will be working diligently to welcome students back to school. Although the return to school will continue to look and feel different for everyone, we all want students to feel safe, welcomed, confident and competent. We want school experiences to be hopeful, enjoyable, and positive.**

**Classroom Teachers and Student Services staff have participated in grade level and transition meetings to discuss student programming strengths and needs. While all subject areas are important, literacy and numeracy instruction will continue to be a prime focus. Teachers will continue to engage in conversations with our Student Services team and Administrators, as they look at student evidence of learning. We follow a triangulated approach of assessment, believing that observations of students in learning situations, conversations with them about the learning process and product they create each play an integral role in indicating where a student is at academically.**

Positive supports will be put in place to assist students' social-emotional learning. Our staff will be spending the coordinated day before students arrive preparing to support children as we transition back to school.

Additional supports will be considered for specific students as available. Staying in contact with the Classroom Teacher through email is a proactive approach to take.

## The Possibility of Remote Learning

Students and families need to be prepared for a blended or fully remote learning model that allows transition of teaching and learning from in-class to remote with as little disruption as possible. Should this arise, schools will be in contact with parents to communicate next steps.

## Donwood School Information

**Our school will be following all guidelines listed above.**

Although all students are required to attend school for in class learning at this time, Classroom Teachers will be working with students to prepare them for the possibility of blended learning or full remote learning. In the event that the guidelines change, all staff will use Microsoft Teams as the main platform for blended and remote learning. The use of Teams will allow for consistency amongst students, staff, and parents.

Parents are asked to become familiar with Microsoft Teams and ensure that they have access to Teams at home to support their child as needed.

If you require support with Microsoft Teams, please contact your child's teacher in September.

## Assessment & Reporting

Students' learning will be assessed on an ongoing basis to ensure that next steps are being appropriately planned for. Learning that occurs in classrooms or remotely will be assessed using good assessment practices that focus on the essential understandings of the curriculum. Additionally, students and parents/caregivers need to be aware that reporting continues to follow the guidelines and policies established by Manitoba Education and reflected in the following RETSD policies:

<https://www.retsd.mb.ca/yourretsd/Policies/Documents/IKAB.pdf>

<https://www.retsd.mb.ca/yourretsd/Policies/Documents/IKA-R.pdf>

<https://www.retsd.mb.ca/yourretsd/Policies/Documents/IKAF.pdf>

<https://www.retsd.mb.ca/yourretsd/Policies/Documents/IKAG.pdf>

## Donwood School Information

**Our school will be following all guidelines listed above.**

Our Student Led Conferences will be held virtually until further notice, to limit the number of additional people in the building at any given time. The purpose of a student led conference with your child is to celebrate successes as well as to discuss next steps your child can work on to improve as a learner. These days will be the same dates listed on our school website. If there are changes to the student led conference format in the future, we will notify families.

Our conference dates are November 25 and 26, 2021 and March 17 and 18, 2022.

## Subject Areas & Specialist Classes

All curriculum areas are important and build students' literacy and numeracy knowledge. Schools will continue to offer all subjects.

### Extracurricular Activities

Activities are permitted based on established processes and must follow public health guidelines. In RETSD this requires cohorting to be maintained in K–6. Team practices can resume in Grades 7–12 and consideration of inter-school play is under review and will consider guidance from Manitoba High School Athletics Association and other partners.

Please know that we value the physical, mental and emotional health benefits of sport and will work diligently to ensure that our students can have access to those benefits. Schools will be working to build physical activity into the school day.

### Music Programming

Music programming is an important part of a well-rounded education. Music programming in RETSD will include:

- In Middle Years and Senior Years, singing is permitted so long as distancing is followed, and masks are worn.
- The sharing of music stands and sheet music is permitted, provided good hand hygiene practices are followed.
- Instruments, including accessories (e.g. drum sticks, mallets) should not be shared. If sharing instruments and accessories is required for equity purposes, then they will be thoroughly cleaned between users.
- In K–5, where students are not yet eligible to be vaccinated and instrument PPE is not available, RETSD is expecting that there will be no indoor singing or wind instrument use. Outdoor singing is promoted and acceptable when complimented by distancing.

## Donwood School Information

**Our school will be following all guidelines listed above.**

**School-wide extra-curricular will be suspended at this time. School clubs may continue in specific cohorts or classrooms.**

**Students in Grades 1 to 5 will have personal music bags with individual instruments to use. Other instruments may be used according to health recommendations, precautions, and sanitization. Choir classes will not be scheduled at this time. Singing will be permitted in outdoor spaces.**

## Student Specific Programming

As is the case for all students, students with additional needs from K–12 will be receiving in-class learning as prescribed by the province. Programming for students with additional needs may include a student specific plan, such as an Individual Education Plan (IEP) or an Adapted Education Plan (AEP). This collaborative planning will be led by the school team and, as needed, supported by divisional staff. If students with additional needs are not able to physically distance, provincial and divisional protocols will guide the necessary next steps.

**Student Services staff will plan, coordinate, and facilitate these meetings with Classroom Teachers. Meetings that occur throughout the school year may be done in person or virtually on Microsoft Teams. Divisional Student Service personnel, including consultants and clinicians, will continue to take an active role in supporting the planning process.**

## Bring Your Own Device (BYOD)

To support the use of technology in teaching and learning, Bring Your Own Device (BYOD) guidelines will be in place for all students.

Encouraging students to use personal devices in classrooms:

- Supports the transition between in-class and remote learning
- Extends teaching and learning opportunities using technology
- Provides opportunity for modelling and teaching digital literacy practices that will be required for in-class and remote learning
- Limits the use of shared technology resources

Teachers, students, and parents should be aware of the BYOD guidelines and the related RETSD policies. This DOES NOT mean that student must have their own device. This approach allows students who have their own device to leverage its use in-class under the direction of the teacher.

RETSD BYOD Parent Guidelines:

<https://www.retsd.mb.ca/Lists/Publications/BYOD%20Parent%20FAQ%20Aug%202020.pdf>

RETSD BYOD Student Guidelines:

<https://www.retsd.mb.ca/Lists/Publications/BYOD%20Student%20guidelines%20Nov%202017.pdf>

<https://www.retsd.mb.ca/yourretsd/Policies/Documents/GBEE.pdf>

<https://www.retsd.mb.ca/yourretsd/Policies/Documents/IJND.pdf>

## Donwood School Information

**Our school will be following all guidelines listed above.**

**Students can bring their own device to the school for learning purposes. Devices will only be used under the direction of the teacher. Devices will remain in each student's backpack in the classroom (stored out of sight) until requested for use. Devices will not go outside for recesses or be used in the classroom during less structured times (indoor recess), unless under the direction of the teacher.**

**Please note as stated in the parent link above, students will be responsible for any lost, stolen, or damaged personal devices just as they are for any other personal items they bring to school. The school division or the school is not responsible for any additional costs that may be incurred.**

**Student must follow digital citizenship guidelines or privileges may be suspended.**

**Parents are asked to read and familiarize themselves with the parent and student guidelines noted above.**

## Student Access to Devices & the Internet

To ensure all students are ready for a possible move to remote learning, **based on need, each school will identify students** who would benefit from being provided with loaner devices that are to be returned at the end of the school year or before.

Students who were provided with a loaner device will be given the opportunity to purchase the loaner device at the end of the school year.

To ensure all students are ready for a possible move to remote learning, **based on need, each school will identify students** who would benefit from the opportunity to have the school division provide home internet access through BELL/MTS.

Parents/caregivers are advised to contact the school for support.

**Donwood staff will work with families who are eligible for this support following the specific divisional guidelines.**

## **Protocol for Shared Equipment**

Students can share equipment as needed however, it is imperative to ensure hand hygiene before and after use.

If possible, staff should limit the use of shared resources. When this is not possible, adequate, and appropriate cleaning must be available.

**Students will be assigned a labelled bin/Ziplock bag of their own personal supplies. Students will sanitize before and after using any shared resources (classroom toys, manipulatives, books as well as classroom play stations)**

**Classroom libraries will be in operation, with teachers sending home books on a regular basis. Books are no longer required to be quarantined or kept out of circulation. This process would include books that are selected by students for Home Reading. Books from our general school Library would follow the same process.**

## **Well-Being, Wellness & Supports Checks**

Student mental health and well-being is a core element of the re-opening planning. It is foundational in ensuring a return to a welcoming environment that supports learning. To this end, RETSD schools will utilize the expertise of parents/caregivers as it relates to their own children. Parents and caregivers know their children the best. To support all the adults supporting children, schools will consider these points:

- Communicate that no one has all of the answers about the impact of the pandemic, but that as a team, we can steer through the pandemic together
- Acknowledge that we need collaboration from adults to support the social-emotional impact of the pandemic on students
- Be open to the concept that students are returning to school with the weight of experiences that they might not have shared yet
- Understand that students will only be as healthy as the adults around them
- Collaborate with parents/caregivers as a coordinated system that gives students hope

As adults we need to remember that children want to be heard. They do not need detailed information about events, but they do need to talk about their feelings. Let them know they can ask questions. We should answer questions honestly, but make sure that the information is suitable for their age level. If answers are not known, it is okay to say so and to look for resources together that can answer their questions.

Remember that children are often listening when others are talking about COVID-19. Adults should consider this and minimize discussions of COVID-19 that are not related to the specific setting. It is important for adults to correct any misinformation as they become aware of it.

We all need to reassure children that our schools are safe for children when they are consistently following preventative practices, including environmental cleaning, frequent hand hygiene, and routine screening.

Parent and student resources can be found at:

Taking Care of Yourself: [www.edu.gov.mb.ca/k12/covid/docs/mpsg\\_taking\\_care.pdf](http://www.edu.gov.mb.ca/k12/covid/docs/mpsg_taking_care.pdf)

Resources for Students and Adults: [www.edu.gov.mb.ca/k12/covid/docs/mpsg\\_resources.pdf](http://www.edu.gov.mb.ca/k12/covid/docs/mpsg_resources.pdf)

Kids Help Phone: <https://kidshelpphone.ca/>

Stress Hacks at: <https://stresshacks.ca/>

## Donwood School Information

**Our school will be following all guidelines listed above.**

Staff will be reviewing these guidelines with students in an age-appropriate manner. Staff are fully aware that each child's social-emotional well-being and overall wellness is especially important at this time. Well-being, wellness and support checks have been implemented into our daily school plan to support students and staff. Our approach will be positive and proactive in nature as we aim to support all students in feeling safe and secure. Open, honest, and consistent communication with your child's teacher will always be key.

We ask parents to continue to partner with us in supporting the social-emotional and academic growth and success of their child. Please talk to your child about their school experiences and discuss guidelines to reinforce safety, health and expected behaviours. There may be routines that are challenging to get used to, but helping your child understand the reasons for the procedures will be most helpful. Focus on the positive and ask your child to share several highlights from their school day.

It is impossible to know all the right answers, but as a team, we can support each other, as we steer through the pandemic together allowing students to feel safe and supported as they return to school.

## COMMUNICATION

### Microsoft Teams

All RETSD schools use Microsoft Teams as our teaching, learning and communication platform. Your child's teacher will be working, in the first weeks, to ensure that your child can access Teams so that should schools move to remote learning, your child is positioned to continue their learning. A parent support document for Teams can be found here:

[https://www.retsd.mb.ca/Lists/Publications/Family%20and%20Guardian%20Guide%20to%20Microsoft%20Teams%20\(2\)%20\(1\).pdf](https://www.retsd.mb.ca/Lists/Publications/Family%20and%20Guardian%20Guide%20to%20Microsoft%20Teams%20(2)%20(1).pdf)

### Stay Informed

RETSD and your child's school are committed to keeping the community informed and engaged. At a divisional level, several structures have been established to support this communication:

Divisional Website—The RETSD divisional website has a section for COVID-19 updates that is clearly visible and regularly updated with any communication and documents. Parents are referred to the website through school communication.

<https://www.retsd.mb.ca>

Divisional Social Media Accounts—Current information is provided in a timely manner through Twitter and Facebook.

<https://twitter.com/RETSDschools>

<https://www.facebook.com/retsdb>

Divisional Letters—Regular information is provided to all families through letters that are branded with the divisional letterhead and signed by the Superintendent. These letters are distributed through the schools electronically or hard copies can be provided to families who request/require them.

Two-way communication—Parents and community members can provide feedback/questions/comments through the division or school websites Contact Us feature, Twitter and Facebook comments, regular surveys, through the school administrator and/or their elected school trustee.



At a school level, the following structures support communication:

- School websites
- School social media
- School letters
- School telephone dialers
- Teacher/family communication

## Concern Protocol

Your child's school will always try to make the learning experience a positive, safe and happy one for its students. However, if you have a concern or an issue, please don't hesitate to let the school know. Open communication between home and school is very important to us. In the event you have a concern, please follow the process below:

- a. Talk to the person most directly involved—your child's teacher. If you must leave a message, provide a day and evening phone number where the teacher can reach you.
- b. If talking to the teacher doesn't resolve the issue, talk to the principal.
- c. If you've talked to the principal, but the issue has not been resolved over a period of time, call the superintendent's department at 204.667.7130 or email [communications@retsd.mb.ca](mailto:communications@retsd.mb.ca).
- d. If you disagree with the decision of the superintendent's department, you can make an appeal in writing to the board of trustees.

Policy KE—Concern Protocol: <https://www.retsd.mb.ca/yourretsd/Policies/Documents/KE.pdf>

Policy KE-R—Concerns and Complaints Process: <https://www.retsd.mb.ca/yourretsd/Policies/Documents/KE-R.pdf>

## Donwood School Information

**Our school will be following all guidelines listed above.**

**Our school will communicate with parents in the following manners: phone, email, school-wide emails, school website, school calendar on the school website, e-newsletters, Microsoft Teams and teacher/family communication. Parents are encouraged to check the school website regularly.**

# What Should I Do if My Child is Sick?



Students should stay home from school if they are sick, no matter how mild the symptoms. If your child comes to school with any COVID-19 symptoms, the school will immediately isolate the student and call parents to pick them up.

If students have one symptom from the Column A or two from Column B, they should immediately get tested for COVID-19.

## Column A

Do you have a new onset, or worsening, of any ONE of the following symptoms?

- Fever > 38°C or think you have a fever or chills
- Cough
- Sore throat/hoarse voice
- Shortness of breath/breathing difficulties
- Loss of taste or smell
- Vomiting or diarrhea for more than 24 hours

## Column B

Do you have a new onset, or worsening, of any TWO of the following symptoms?

- Runny nose
- Muscle aches
- Fatigue
- Conjunctivitis (pink eye)
- Headache
- Skin rash of unknown cause
- Nausea or loss of appetite
- Poor feeding (if an infant)

## When Can My Child Return to School?

If your child gets tested for COVID-19 and is:



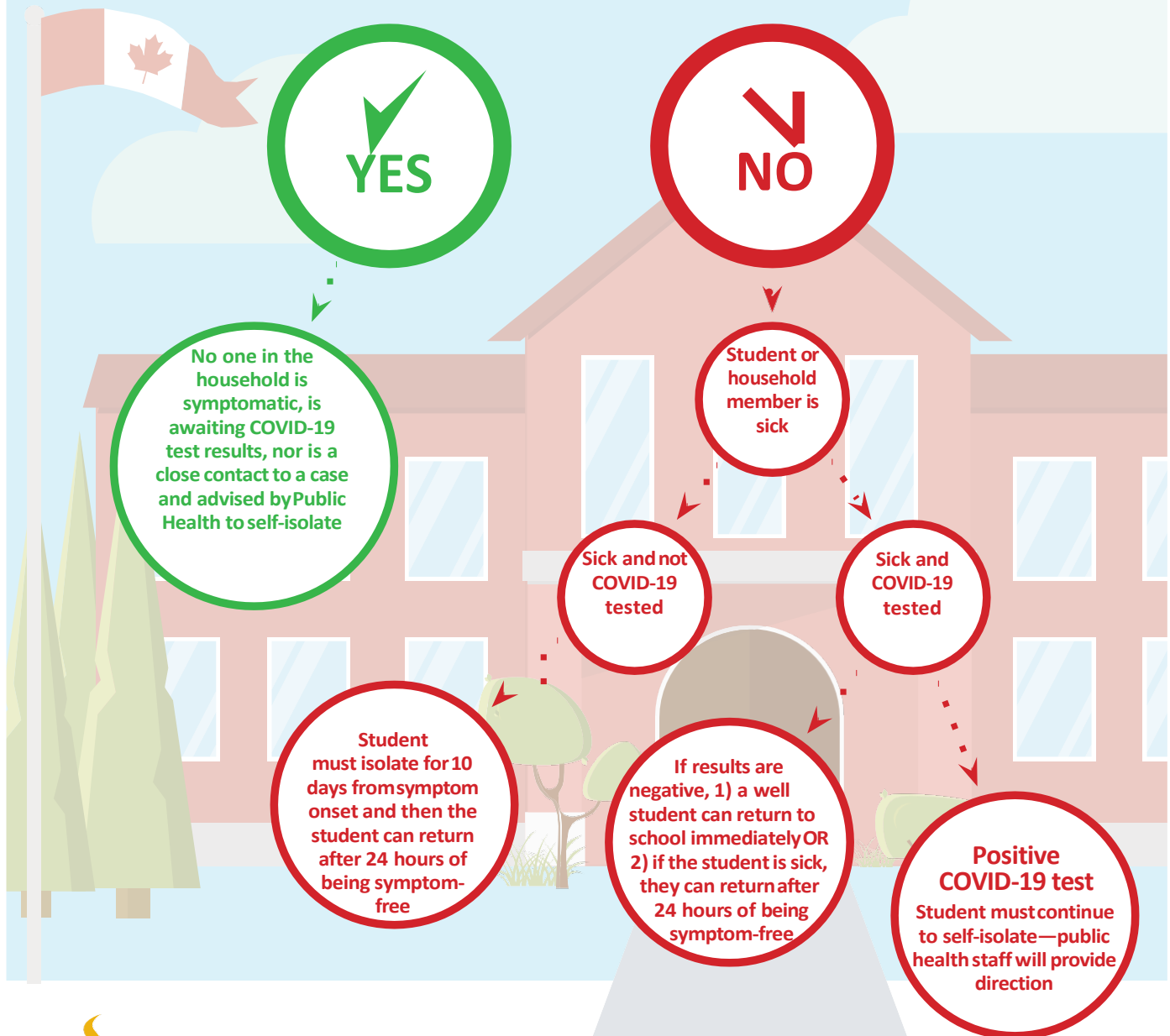
**Negative:** They can return to school after 24 hours of being symptom-free.

**Positive:** Public Health will provide guidance regarding what is required before your child can return to school.

If your child is sick and you decide not to get tested for COVID-19 the student must self-isolate for 10 days from symptom onset plus 24 hours of being symptom-free before returning to school.



# When Can Students Attend School?





*creating student success*

*For questions and comments, please contact us at:*

400 Donwood Dr., Winnipeg, MB R2G 0X4 | Tel: 204.668.9438 | Fax: 204.668.9269 Email: [don@retsd.mb.ca](mailto:don@retsd.mb.ca)

