

Placing Senior 1 Students in the High School Setting



Public Consultations
March 17, 19, 20, 2003

Rod Uzat, Communications and Research Officer – RETSD
phone:667-7130 (402) or ruzat@co.resd.mb.ca



Background

- June 2000, River East School Division struck a study committee to determine the most appropriate placement for Senior 1 students



Background

The terms of reference for the Study Committee were:

- To examine all relevant factors and information on the questions “do we retain Senior 1 students in junior highs with the appropriate adjustments in scheduling, teaching and organization, or do we locate them in high school(s)?”
- To report to the Board in writing and to include data, recommendations, and a plan of action regarding the study question.



Background

- June 2001, the Board of Trustees accepted the recommendation that the most appropriate place for Senior 1 students be in a high school setting, as long as attention is paid to the conditions needed to support positive transition and success for Senior 1 students and their teachers.
- The Board directed the Committee to develop an action plan, which detailed how they intended to explore, analyze, and consult on specific options regarding the placement of Senior 1 students in a high school setting.



Background

- May 2002, after extensive public consultation, the Board accepted the recommendation that the appropriate grade groupings for the Division were Kindergarten to Grade 5 for elementary (early years) schools, Grades 6-8 for middle schools (middle years), and Senior 1 to Senior 4 for high schools (senior years).
- The Board then charged the Committee with the task of exploring the actual impact of reconfiguration and developing options regarding the implications for specific schools and communities.



The Real Challenge in Moving S1 Students to the High Schools

2002-2003 Enrollment Projections



	2007	2008	2009	2010	2011
S1's	935	967	903	837	845
Kildonan-East (900-1080)	1053	1023	1008	994	984
Miles Mac (900-1080)	1143	1142	1155	1149	1144
River East (990-1188)	1200	1178	1157	1143	1094
Total S2-S4 (2790-3348)	3396	3343	3320	3286	3222



Possible Solutions

The Committee explored, examined, and evaluated the following options:

- Distributing the enrollment overflow through the amalgamated Transcona schools
- Expanding the existing high schools in the River East Area
- Converting an existing school to a high school and absorbing the students who would have originally attended the converted school through other neighboring schools
- Constructing a new high school

Rejected Options





Distributing the Enrollment Overflow Through Transcona High Schools

- Projected 2007 enrollment - 1554
- Available space – 2025
- 471 available spaces in Transcona
- Roughly 71% of that available space is found at Murdoch Mackay
- The Division will still be about 400 spaces short.



Converting Bernie Wolfe to a High School

- Building suitable for conversion to a high school for 800-850
- 2007 projected enrollment - 447
- Approximately 19% of the school's present enrollment is either in Division out of catchment or out of Division
- If the same proportional rate holds true, 362 students will have to be bussed out of their catchment and divided amongst the other Transcona Area schools



Converting Bernie Wolfe to a High School

- School is completely removed from any other neighborhood schools
- This would require that 362 (projected) students from the Bernie Wolfe area to various schools in the heart of residential Transcona
- TRC upstairs at Bernie Wolfe is often used during the week for staff training and large group meetings of over 100 people
- Without the use of this facility, the Division would likely have to rent space elsewhere

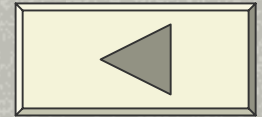


Converting Bernie Wolfe to a High School

- Parking lot is inadequate and would have to be expanded westward
- There would be a significant cost associated with adding high school quality science labs
- Enclosing of the open area for classrooms would be costly



Expanding the Existing High Schools in the River East Area



- The Committee considered adding in excess of 300 students to Kildonan-East, River East, and Miles Macdonell
- Administrators at each school were asked to consider what their needs would be for an additional 300+ students
- This feedback was then passed on to MCM Architects Inc. for consideration



Expanding the Existing High Schools in the River East Area

Miles Macdonell Collegiate

- The shape and size of the building permits a two storey addition to the east (would require City of Wpg variance – site exceeds present by-law for site coverage)
- This would eliminate all remaining outdoor instructional and recreational space
- The core facilities are undersized – additional increases will require major interior upgrading and renovations
- With the addition, there is no space for the additional parking that would be required
- The age of the structure and mechanical and electrical systems may increase renovations costs



Expanding the Existing High Schools in the River East Area

River East Collegiate

- The shape and size of the building permits a two storey addition to the north
- This would compromise the available outdoor instructional and recreational space for both River East and Chief Peguis
- The core facilities are undersized – additional increases will require major interior upgrading and renovations
- Again, more space would be required for parking and would consequently take away from available outdoor space
- The age of the structure and mechanical and electrical systems may increase renovations costs



Expanding the Existing High Schools in the River East Area

Kildonan-East Collegiate

- The shape and size of the building permits a two storey addition to the east
- There would be no compromise to exterior instructional and recreational activities
- The core facilities can accommodate increased student population with minor alterations
- Additional parking space can be accommodated
- The existing building and its systems are economically adaptable for an increased population



Expanding the Existing High Schools in the River East Area

- While Kildonan-East Collegiate could best accommodate such changes cost effectively, Miles Mac and River East could not
- Each high school would be in excess of 1300 students
- After reviewing educational research literature, the Committee did not feel that students would be best served by larger schools




Converting Emerson to a High School

- 2007 projected enrollment – 244
- 2007 Maple Leaf projected enrollment- 289
- Maple Leaf and Emerson combined would be 533 for 2007
- With some alterations in programming in order to free up potential classroom space, Maple Leaf's capacity changes from 382-459 to 427-513
- Two or three HQR's would still be necessary



Converting Emerson to a High School

- Emerson was also considered a potentially strong location
- It is in the northern area of the Division, where the future need for high school students is greatest
- It addresses the difficulties inherent in having two high schools in close proximity to each other, as is the case in the use of either Chief Peguis or John Pritchard



Converting Emerson to a High School

- Ultimately dismissed as a viable option because the renovations necessary were found to be prohibitive
- All core facilities would require upgrading
- Existing classrooms would have to be reworked to meet needs
- Parking needs would be tripled
- Recreational field would be eliminated
- The addition required would be almost twice the size of the existing facility
- As well, the building site (6.4 acres) did not meet PSFB standards for a high school site (8-10 acres)
- Disadvantageous location - it sits somewhat removed from the heart of the most densely populated area that consistently yields high school students



Converting John Pritchard to a High School

- Core facilities would be inadequate for a high school of 800-850
- The existing building structure and systems (school has had a number of refits) would lead to extensive upgrading costs
- Parking is limited and expansion would reduce the availability of space for recreation and outdoor education



Converting Chief Peguis to an Annex of River East Collegiate

Advantages

- This would require no change in River East Collegiate's catchment
- Chief Peguis would not have to be “remarketed” as a high school



Converting Chief Peguis to an Annex of River East Collegiate

Disadvantages

- The Division would create an entirely new setting unique to the Division
- Building a school community and a cohesive culture in two buildings would be difficult
- Increased size (1800-1900 students) would be an issue



Remaining Viable Options

- Construct a new high school
- Convert Chief Peguis to a high school



Constructing a New High School

- PSFB has suggested that the building will cost roughly \$15 million
- The school would accommodate 800-850 students and would permit all schools in the River East Area to house S1-S4 students



Constructing a New High School - Building North of the Perimeter

Advantages

- Addresses the area that has the highest rate of growth
- Division already owns property on Donald Road



Constructing a New High School - Building North of the Perimeter

Disadvantages

- Would likely only be built to accommodate 350-500 students (not nearly enough students to take significant pressure off of River East)
- Additional space would still be required to accommodate all S1 students throughout the River East Area
- The Division would not be able to offer the same range of programs and services that are available at the three existing high schools



Constructing a New High School - Building South of the Perimeter

Advantages

- A catchment that includes a high school student population of approximately 800 could be generated
- As a high school of similar size to the three existing buildings, it could offer comparable programming and services
- All S1 students could be accommodated within the four high schools
- Logical location in keeping with the traditional daytime student flow (south in the A.M. and north in the P.M.) convenient for parents going to work and divisional transportation routing



Constructing a New High School - Building South of the Perimeter

Disadvantages

- Land would have to be located and purchased
- Residents north of the perimeter may view this as a school outside of their neighborhood



Converting a Junior High to a High School

Considering the Options:

Deciding on which junior high school would be appropriate for conversion into a high school should be based on careful consideration of the following:

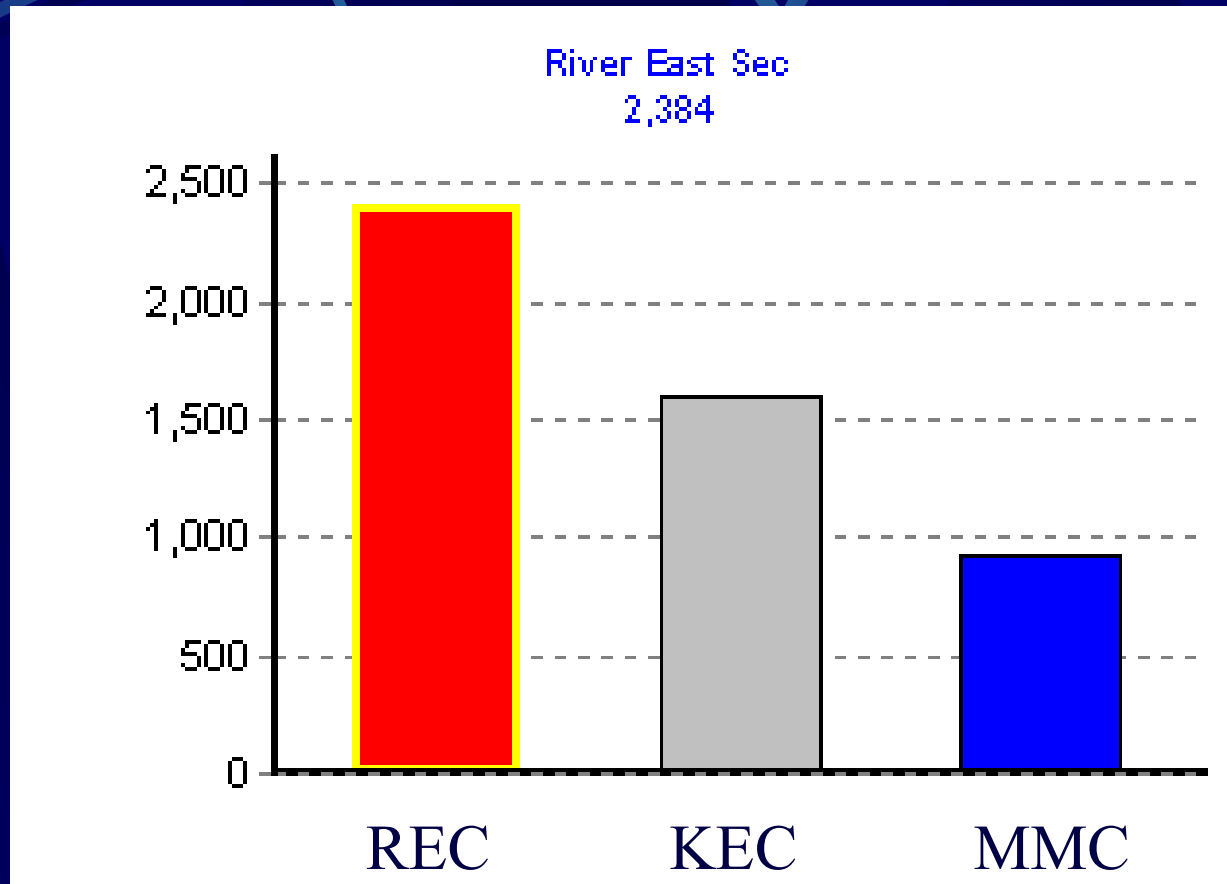
- Displacement of students
- Enrollment patterns
- Suitability of the building

Displacement of Students

School	Grade 7 and 8 Students		
	Regular Out of Catchment	Percent of School Enrollment	
John Pritchard	124	(291)	42.6% (+ 13 out of division)
Chief Peguis	61	(467)	13.1% (+ 8 out of division)
Valley Gardens	40	(295)	13.6% (+ 7 out of division)
John Henderson	25	(284)	8.8% (+ 17 out of division)
Munroe	18	(227)	7.9% (+ 41 out of division)
Salisbury Morse Place	7	(159)	4.4% (+ 12 out of division)
Robert Andrews	7	(275)	2.5% (+ 7 out of division)

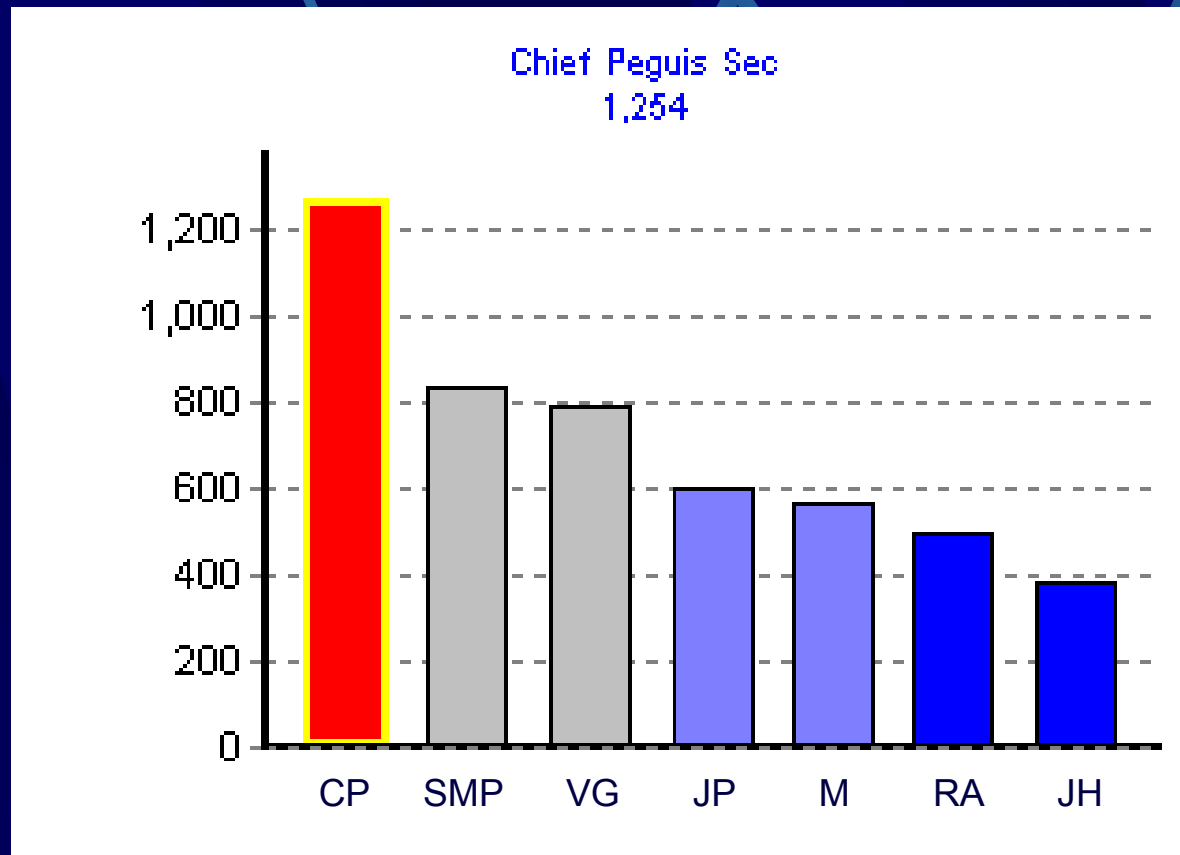
Enrollment Patterns

Age Distribution 0-4 by High School Catchment



Enrollment Patterns

Age Distribution 0-4 by Junior High Catchment

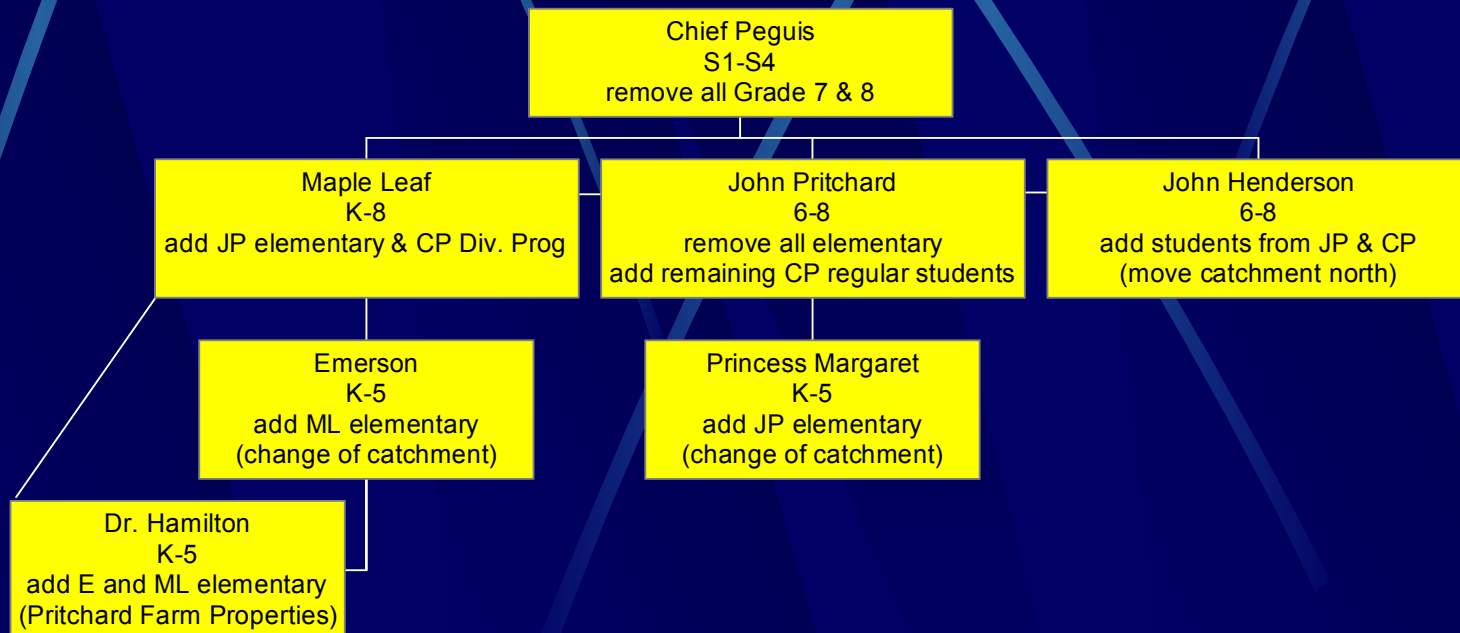





Suitability of the Building

- Chief Peguis is by far the most suitable building for conversion to a high school
- The existing building condition and systems are economically adaptable for an increased population
- The core facilities will require minor upgrading and renovations
- Although additional parking and expansion will reduce the available outdoor space, the remaining space will permit proper recreational activities
- The school will require a single storey addition to the west

Converting Chief Peguis to a High School






Chief Peguis as a High School

Advantages

- Location is well-suited to accommodating demands of the area in an S1-S4 configuration
- Building is clearly the best, most cost-effective option of all the possible schools in the area
- Of the scenarios involving the conversion of an existing school, Chief Peguis would be one of the least disruptive options available, as it has the second highest number of regular out of catchment students



Chief Peguis as a High School

Disadvantages

- Proximity to River East (additional demands on parking)
- Problem of having to “remarket” Chief Peguis as a high school – How would this be received?

